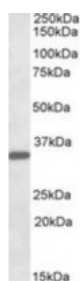




Hepassocin Antibody

CATALOG NUMBER: 42-206



Western blot analysis of Hepassocin in human liver lysate (35 ug protein in rIPA buffer) using Hepassocin Antibody at 0.1 ug/mL.

Specifications

SPECIES REACTIVITY:	Human
TESTED APPLICATIONS:	ELISA, WB
APPLICATIONS:	ELISA: Antibody detection limit dilution 1:16000. Western Blot: Approximately 35 kDa band observed in human liver lysates (calculated MW of 36.4 kDa according to NP_004458.3). Recommended concentration: 0.1-0.3 ug/mL.
POSITIVE CONTROL:	1) Cat. No. 1304 - Human Liver Tissue Lysate
IMMUNOGEN:	Hepassocin antibody was raised against a 13 amino acid synthetic peptide near the internal region of Hepassocin.
HOST SPECIES:	Goat

Properties

PURIFICATION:	Hepassocin antibody was purified from goat serum by ammonium sulphate precipitation followed by antigen affinity chromatography using the immunizing peptide.
PHYSICAL STATE:	Liquid
BUFFER:	Hepassocin antibody is supplied in Tris saline, 0.02% sodium azide, pH 7.3 with 0.5% bovine serum albumin.
CONCENTRATION:	500 ug/mL
STORAGE CONDITIONS:	Aliquot and store at -20°C. Minimize freezing and thawing.
CLONALITY:	Polyclonal
CONJUGATE:	Unconjugated

Additional Info

ALTERNATE NAMES:	Hepassocin, hepatocyte-derived fibrinogen-related protein 1, hepatocellular carcinoma-related sequence, hepascocin, OTTHUMP00000122468, MGC12455, LFIRE1, HP-041, HFREP1, fibrinogen-like 1, FGL1
ACCESSION NO.:	NP_004458.3
PROTEIN GI NO.:	42544189
OFFICIAL SYMBOL:	FGL1

GENE ID: 2267

Background

REFERENCES: 1) Liu Z, Ukomadu C, Fibrinogen-like protein 1, a hepatocyte derived protein is an acute phase reactant.
Biochemical and biophysical research communications 2008 Jan 365 (4): 729-34.

FOR RESEARCH USE ONLY

December 13, 2016