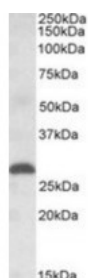




PLGF Antibody

CATALOG NUMBER: 42-184



Western blot analysis of PLGF in human placenta lysate (35 ug protein in ripa buffer) using PLGF Antibody at 1 ug/mL.

Specifications

SPECIES REACTIVITY:	Human
TESTED APPLICATIONS:	ELISA, WB
APPLICATIONS:	ELISA: Antibody detection limit dilution 1:1000. Western Blot: Approximately 28 kDa band observed in human placenta lysates (calculated MW of 19.3 kDa according to NP_002623.2). The observed molecular weight corresponds to the glycosylated form. Recommended concentration: 1-3 ug/mL.
POSITIVE CONTROL:	1) Cat. No. 1309 - Human Placenta Lysate
IMMUNOGEN:	PLGF antibody was raised against a 14 amino acid synthetic peptide near the internal region of PLGF.
HOST SPECIES:	Goat

Properties

PURIFICATION:	PLGF antibody was purified from goat serum by ammonium sulphate precipitation followed by antigen affinity chromatography using the immunizing peptide.
PHYSICAL STATE:	Liquid
BUFFER:	PLGF antibody is supplied in Tris saline, 0.02% sodium azide, pH 7.3 with 0.5% bovine serum albumin.
CONCENTRATION:	500 ug/mL
STORAGE CONDITIONS:	Aliquot and store at -20°C. Minimize freezing and thawing.
CLONALITY:	Polyclonal
CONJUGATE:	Unconjugated

Additional Info

ALTERNATE NAMES:	PLGF, placental growth factor-like, placental growth factor, vascular endothelial growth factor-related protein, placenta growth factor, SHGC-10760, PIGF-2, PLGF, PGFL, D12S1900, PGF
ACCESSION NO.:	NP_002623.2
PROTEIN GI NO.:	20149543
OFFICIAL SYMBOL:	PGF
GENE ID:	5228

Background

REFERENCES:

1) Cao Y, Ji WR, Qi P, Rosin A, Cao Y Placenta growth factor: identification and characterization of a novel isoform generated by RNA alternative splicing Biochem Biophys Res Commun. 1997 Jun 27;235(3):493-8.

FOR RESEARCH USE ONLY

December 13, 2016