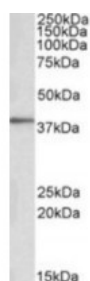




PRKCDBP Antibody

CATALOG NUMBER: 42-178



Western blot analysis of PRKCDBP in human Adipose lysate (35 ug protein in ripa buffer) using PRKCDBP Antibody at 0.1 ug/mL.

Specifications

SPECIES REACTIVITY:	Human, Mouse
TESTED APPLICATIONS:	ELISA, WB
APPLICATIONS:	ELISA: Antibody detection limit dilution 1:32000. Western Blot: Approximately 38 kDa band observed in human adipose and NIH3T3 lysates (calculated MW of 27.7 kDa according to human NP_659477.2 and 27.8 kDa according to mouse NP_082720.1). The observed molecular weight corresponds to earlier findings in literature with different antibodies (Bastiani M, J Cell Biol. 2009 Jun 29;185 (7) :1259-73. PMID: 19546242). Recommended concentration: 0.1-1 ug/mL.
POSITIVE CONTROL:	1) Cat. No. XBL-11048 - Human Adipose Tissue Lysate
IMMUNOGEN:	PRKCDBP antibody was raised against a 12 amino acid synthetic peptide near the internal region of PRKCDBP.
HOST SPECIES:	Goat

Properties

PURIFICATION:	PRKCDBP antibody was purified from goat serum by ammonium sulphate precipitation followed by antigen affinity chromatography using the immunizing peptide.
PHYSICAL STATE:	Liquid
BUFFER:	PRKCDBP antibody is supplied in Tris saline, 0.02% sodium azide, pH 7.3 with 0.5% bovine serum albumin.
CONCENTRATION:	500 ug/mL
STORAGE CONDITIONS:	Aliquot and store at -20°C. Minimize freezing and thawing.
CLONALITY:	Polyclonal
CONJUGATE:	Unconjugated

Additional Info

ALTERNATE NAMES:	PRKCDBP, sdr-related gene product that binds to c-kinase, SRBC, MGC20400, HSRBC, protein kinase C, delta binding protein, PRKCDBP
ACCESSION NO.:	NP_659477.2
PROTEIN GI NO.:	47132587

OFFICIAL SYMBOL: PRKCDBP

GENE ID: 112464

Background

REFERENCES: 1) McMahon KA, Zajicek H, Li WP, Peyton MJ, Minna JD, Hernandez VJ, Luby-Phelps K, Anderson RG. SRBC/cavin-3 is a caveolin adapter protein that regulates caveolae function. The EMBO journal 2009 Apr 28 (8): 1001-15.

FOR RESEARCH USE ONLY

December 13, 2016