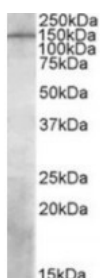




PREX1 Antibody

CATALOG NUMBER: 42-175



Western blot analysis of PREX1 in human temporal cortex lysate (35 ug protein in ripa buffer) using PREX1 Antibody at 1 ug/mL.

Specifications

SPECIES REACTIVITY:	Human
TESTED APPLICATIONS:	ELISA, WB
APPLICATIONS:	ELISA: Antibody detection limit dilution 1:16000. Western Blot: Approximately 150 kDa band observed in human brain (temporal cortex) lysates (calculated MW of 186 kDa according to NP_065871.2). Recommended concentration: 1-3 ug/mL.
POSITIVE CONTROL:	1) Cat. No. 1378 - Human Temporal Lobe Tissue Lysate
IMMUNOGEN:	PREX1 antibody was raised against a 13 amino acid synthetic peptide near the internal region of PREX1.
HOST SPECIES:	Goat

Properties

PURIFICATION:	PREX1 antibody was purified from goat serum by ammonium sulphate precipitation followed by antigen affinity chromatography using the immunizing peptide.
PHYSICAL STATE:	Liquid
BUFFER:	PREX1 antibody is supplied in Tris saline, 0.02% sodium azide, pH 7.3 with 0.5% bovine serum albumin.
CONCENTRATION:	500 ug/mL
STORAGE CONDITIONS:	Aliquot and store at -20°C. Minimize freezing and thawing.
CLONALITY:	Polyclonal
CONJUGATE:	Unconjugated

Additional Info

ALTERNATE NAMES:	PREX1, phosphatidylinositol 3, 4, 5-trisphosphate-dependent Rac exchanger 1, OTTHUMP00000031228, P-REX1, KIAA1415, phosphatidylinositol-3, 5-trisphosphate-dependent Rac exchange factor 1, PREX1
ACCESSION NO.:	NP_065871.2
PROTEIN GI NO.:	34452732
OFFICIAL SYMBOL:	PREX1

GENE ID: 57580

Background

REFERENCES: 1) Qin J, Xie Y, Wang B, Hoshino M, Wolff DW, Zhao J, Scofield MA, Dowd FJ, Lin MF, Tu Y. Upregulation of PIP3-dependent Rac exchanger 1 (P-Rex1) promotes prostate cancer metastasis. Oncogene 2009 Apr 28 (16): 1853-63.

FOR RESEARCH USE ONLY

December 13, 2016