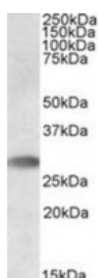




INDOL1 Antibody

CATALOG NUMBER: 42-174



Western blot analysis of INDOL1 in human bone marrow lysate (ripa buffer, 35 ug total protein per lane) using INDOL1 Antibody at 0.5 ug/mL.

Specifications

SPECIES REACTIVITY:	Human
TESTED APPLICATIONS:	ELISA, WB
APPLICATIONS:	ELISA: Antibody detection limit dilution 1:2000. Western Blot: Approximately 30 kDa band observed in human bone marrow lysates (calculated MW of 32.7 kDa according to NP_835468.1). Recommended concentration: 0.3-1 ug/mL.
POSITIVE CONTROL:	1) Human Bone Marrow Lysate
IMMUNOGEN:	INDOL1 antibody was raised against a 12 amino acid synthetic peptide near the C-Terminus of INDOL1.
HOST SPECIES:	Goat

Properties

PURIFICATION:	INDOL1 antibody was purified from goat serum by ammonium sulphate precipitation followed by antigen affinity chromatography using the immunizing peptide.
PHYSICAL STATE:	Liquid
BUFFER:	INDOL1 antibody is supplied in Tris saline, 0.02% sodium azide, pH 7.3 with 0.5% bovine serum albumin.
CONCENTRATION:	500 ug/mL
STORAGE CONDITIONS:	Aliquot and store at -20°C. Minimize freezing and thawing.
CLONALITY:	Polyclonal
CONJUGATE:	Unconjugated

Additional Info

ALTERNATE NAMES:	INDOL1, TREM-like transcript 1, OTTHUMP00000017858, dJ238O23.3, TLT1, TLT-1, PRO3438, MGC119173, GLTL1825, triggering receptor expressed on myeloid cells-like 1, TREML1, INDOL1
ACCESSION NO.:	NP_919270.2
PROTEIN GI NO.:	148539554
OFFICIAL SYMBOL:	IDO2

GENE ID: 169355

Background

REFERENCES: 1) Nurden AT, Nurden P, Bermejo E, Combrie R, McVicar DW, Washington AV. Phenotypic heterogeneity in the Gray platelet syndrome extends to the expression of TREM family member, TLT-1. Thrombosis and haemostasis 2008 Jul 100 (1): 45-51.

FOR RESEARCH USE ONLY

December 13, 2016