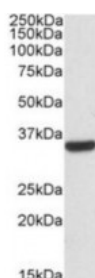




CNN2 Antibody

CATALOG NUMBER: 42-116



Western blot analysis of CNN2 in HepG2 lysates (35 ug protein in RIPA buffer) with (B) and without (A) blocking with the immunizing peptide using CNN2 Antibody at 0.03 ug/mL.

Specifications

SPECIES REACTIVITY:	Human
TESTED APPLICATIONS:	ELISA, WB
APPLICATIONS:	ELISA: Antibody detection limit dilution 1:32000. Western Blot: Approximately 35 kDa band observed in HEPG2 lysate (calculated MW of 33.7 kDa according to NP_004359.1). Recommended concentration: 0.03-0.1 ug/mL.
POSITIVE CONTROL:	1) Cat. No. 1211 - HepG2 Cell Lysate
SPECIFICITY:	This antibody is expected to recognize both reported isoforms (NP_004359.1; NP_958434.1), but it is not expected to cross-react with CCN3.
IMMUNOGEN:	CNN2 antibody was raised against a 15 amino acid synthetic peptide near the internal region (near C-Terminus) of CNN2 (near C-Terminus).
HOST SPECIES:	Goat

Properties

PURIFICATION:	CNN2 antibody was purified from goat serum by ammonium sulphate precipitation followed by antigen affinity chromatography using the immunizing peptide.
PHYSICAL STATE:	Liquid
BUFFER:	CNN2 antibody is supplied in Tris saline, 0.02% sodium azide, pH 7.3 with 0.5% bovine serum albumin.
CONCENTRATION:	500 ug/mL
STORAGE CONDITIONS:	Aliquot and store at -20°C. Minimize freezing and thawing.
CLONALITY:	Polyclonal
CONJUGATE:	Unconjugated

Additional Info

ALTERNATE NAMES:	neutral calponin, calponin H2, smooth muscle, calponin 2, CNN2,
ACCESSION NO.:	NP_004359.1, NP_958434.1
PROTEIN GI NO.:	4758018

OFFICIAL SYMBOL:	CNN2
GENE ID:	1265

Background

REFERENCES: 1) Masuda H, Tanaka K, Takagi M, Ohgami K, Sakamaki T, Shibata N, Takahashi K, Molecular cloning and characterization of human non-smooth muscle calponin. Journal of biochemistry 1996 Aug 120 (2): 415-24.

FOR RESEARCH USE ONLY

December 13, 2016