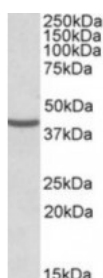




## NUDC Antibody

CATALOG NUMBER: 42-108



Western blot analysis of NUDC in HeLa lysate (35 ug protein in RIPA buffer) using NUDC Antibody at 0.3 ug/mL.

### Specifications

<b>SPECIES REACTIVITY:</b>	Human
<b>TESTED APPLICATIONS:</b>	ELISA, WB
<b>APPLICATIONS:</b>	ELISA: Antibody detection limit dilution 1:32000. Western Blot: Approximately 40 kDa band observed in HeLa lysate (calculated MW of 38.2 kDa according to NP_006591.1). Recommended concentration: 0.3-1 ug/mL.
<b>POSITIVE CONTROL:</b>	1) Cat. No. 1201 - HeLa Cell Lysate
<b>IMMUNOGEN:</b>	NUDC antibody was raised against a 13 amino acid synthetic peptide near the internal region of NUDC.
<b>HOST SPECIES:</b>	Goat

### Properties

<b>PURIFICATION:</b>	NUDC antibody was purified from goat serum by ammonium sulphate precipitation followed by antigen affinity chromatography using the immunizing peptide.
<b>PHYSICAL STATE:</b>	Liquid
<b>BUFFER:</b>	NUDC antibody is supplied in Tris saline, 0.02% sodium azide, pH 7.3 with 0.5% bovine serum albumin.
<b>CONCENTRATION:</b>	500 ug/mL
<b>STORAGE CONDITIONS:</b>	Aliquot and store at -20°C. Minimize freezing and thawing.
<b>CLONALITY:</b>	Polyclonal
<b>CONJUGATE:</b>	Unconjugated

### Additional Info

<b>ALTERNATE NAMES:</b>	nuclear distribution gene C homolog, OTTHUMP00000004405, NPD011, MNUDC, HNUDC, nuclear distribution gene C homolog (A. nidulans), NUDC
<b>ACCESSION NO.:</b>	NP_006591.1
<b>PROTEIN GI NO.:</b>	5729953
<b>OFFICIAL SYMBOL:</b>	NUDC
<b>GENE ID:</b>	10726

## Background

**REFERENCES:** 1) Tang YS, Zhang YP, Xu P, hNUDC promotes the cell proliferation and differentiation in a leukemic cell line via activation of the thrombopoietin receptor (Mpl). Leukemia : official journal of the Leukemia Society of America, Leukemia Research Fund, U.K 2008 May 22 (5): 1018-25.

---

**FOR RESEARCH USE ONLY**

December 13, 2016