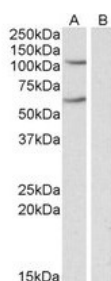




## IREB2 Antibody

CATALOG NUMBER: 42-103



Western blot analysis of IREB2 in human liver lysate (35 ug protein in RIPA buffer) using IREB2 Antibody at 0.3 ug/mL.

### Specifications

<b>SPECIES REACTIVITY:</b>	Human
<b>TESTED APPLICATIONS:</b>	ELISA, IHC, WB
<b>APPLICATIONS:</b>	ELISA: Antibody detection limit dilution 1:32000. Western Blot: Approximately 110 kDa band observed in human liver lysates (calculated MW of 105 kDa according to NP_004127.1). Recommended concentration: 1-3 ug/mL. an additional band of unknown identity was also consistently observed at 60 kDa . This band was successfully blocked by incubation with the immunizing peptide.
<b>POSITIVE CONTROL:</b>	1) Cat. No. 1304 - Human Liver Tissue Lysate
<b>IMMUNOGEN:</b>	IREB2 antibody was raised against a 15 amino acid synthetic peptide near the internal region of IREB2.
<b>HOST SPECIES:</b>	Goat

### Properties

<b>PURIFICATION:</b>	IREB2 antibody was purified from goat serum by ammonium sulphate precipitation followed by antigen affinity chromatography using the immunizing peptide.
<b>PHYSICAL STATE:</b>	Liquid
<b>BUFFER:</b>	IREB2 antibody is supplied in Tris saline, 0.02% sodium azide, pH 7.3 with 0.5% bovine serum albumin.
<b>CONCENTRATION:</b>	500 ug/mL
<b>STORAGE CONDITIONS:</b>	Aliquot and store at -20°C. Minimize freezing and thawing.
<b>CLONALITY:</b>	Polyclonal
<b>CONJUGATE:</b>	Unconjugated

### Additional Info

<b>ALTERNATE NAMES:</b>	iron regulatory protein 2, IRP2AD, IRP2, FLJ23381, ACO3, iron-responsive element binding protein 2, IREB2
<b>ACCESSION NO.:</b>	NP_004127.1
<b>PROTEIN GI NO.:</b>	41352693
<b>OFFICIAL SYMBOL:</b>	IREB2
<b>GENE ID:</b>	3658

## Background

**REFERENCES:** 1) Wang W, Di X, D'Agostino RB, Torti SV, Torti FM, Excess capacity of the iron regulatory protein system. The Journal of biological chemistry 2007 Aug 282 (34): 24650-9.

---

**FOR RESEARCH USE ONLY**

December 13, 2016