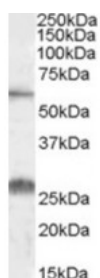




SLC47A1 Antibody

CATALOG NUMBER: 42-080



Western blot analysis of SLC47A1 in human kidney lysate (35 ug protein in RIPA buffer) using SLC47A1 Antibody at 0.1 ug/mL.

Specifications

SPECIES REACTIVITY:	Human
TESTED APPLICATIONS:	ELISA, WB
APPLICATIONS:	ELISA: Antibody detection limit dilution 1:64000. Western Blot: Approximately 60 kDa band observed in human kidney lysates (calculated MW of 61.9 kDa according to NP_060712.2). Recommended concentration: 0.1-0.3 ug/mL. an additional band of unknown identity was also consistently observed at 26 kDa . This band was successfully blocked by incubation with the immunizing peptide.
POSITIVE CONTROL:	1) Cat. No. 1305 - Human Kidney Tissue Lysate
IMMUNOGEN:	SLC47A1 antibody was raised against a 14 amino acid synthetic peptide near the internal region (near C-Terminus) of SLC47A1 (near C-Terminus).
HOST SPECIES:	Goat

Properties

PURIFICATION:	SLC47A1 antibody was purified from goat serum by ammonium sulphate precipitation followed by antigen affinity chromatography using the immunizing peptide.
PHYSICAL STATE:	Liquid
BUFFER:	SLC47A1 antibody is supplied in Tris saline, 0.02% sodium azide, pH 7.3 with 0.5% bovine serum albumin.
CONCENTRATION:	500 ug/mL
STORAGE CONDITIONS:	Aliquot and store at -20°C. Minimize freezing and thawing.
CLONALITY:	Polyclonal
CONJUGATE:	Unconjugated

Additional Info

ALTERNATE NAMES:	multidrug and toxin extrusion 1, MGC64822, MATE1, FLJ10847, solute carrier family 47, member 1, SLC47A1
ACCESSION NO.:	NP_060712.2
PROTEIN GI NO.:	22907060
OFFICIAL SYMBOL:	SLC47A1

GENE ID: 55244

Background

REFERENCES: 1) Chen Y, Zhang S, Sorani M, Giacomini KM. Transport of paraquat by human organic cation transporters and multidrug and toxic compound extrusion family. J. Pharmacol. Exp. Ther. 2007 Aug 322 (2): 695-700.

FOR RESEARCH USE ONLY

December 13, 2016