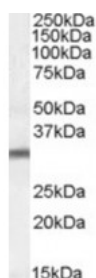




## PSMG1 Antibody

CATALOG NUMBER: 42-077



Western blot analysis of PSMG1 in Jurkat lysate (35 ug protein in RIPA buffer) using PSMG1 Antibody at 0.3 ug/mL.

### Specifications

<b>SPECIES REACTIVITY:</b>	Human
<b>TESTED APPLICATIONS:</b>	ELISA, WB
<b>APPLICATIONS:</b>	ELISA: Antibody detection limit dilution 1:64000. Western Blot: Approximately 30 kDa band observed in lysates in Jurkat (calculated MW of 30.3 kDa according to NP_982257.1). Recommended concentration: 0.3-1 ug/mL.
<b>POSITIVE CONTROL:</b>	1) Cat. No. 1205 - Jurkat Cell Lysate
<b>SPECIFICITY:</b>	This antibody is expected to recognize both reported isoforms (NP_003711.1; NP_982257.1).
<b>IMMUNOGEN:</b>	PSMG1 antibody was raised against a 14 amino acid synthetic peptide near the C-Terminus of PSMG1.
<b>HOST SPECIES:</b>	Goat

### Properties

<b>PURIFICATION:</b>	PSMG1 antibody was purified from goat serum by ammonium sulphate precipitation followed by antigen affinity chromatography using the immunizing peptide.
<b>PHYSICAL STATE:</b>	Liquid
<b>BUFFER:</b>	PSMG1 antibody is supplied in Tris saline, 0.02% sodium azide, pH 7.3 with 0.5% bovine serum albumin.
<b>CONCENTRATION:</b>	500 ug/mL
<b>STORAGE CONDITIONS:</b>	Aliquot and store at -20°C. Minimize freezing and thawing.
<b>CLONALITY:</b>	Polyclonal
<b>CONJUGATE:</b>	Unconjugated

### Additional Info

<b>ALTERNATE NAMES:</b>	proteasome assembling chaperone 1, leucine rich protein C21-LRP, chromosome 21 leucine-rich protein, Down syndrome critical region protein 2, Down syndrome critical region gene 2, PAC1, LRPC21, DSCR2, C21LRP, proteasome (prosome, macropain) assembly chaperone 1, PSMG1
<b>ACCESSION NO.:</b>	NP_003711.1, NP_982257.1
<b>PROTEIN GI NO.:</b>	4505023
<b>OFFICIAL SYMBOL:</b>	PSMG1

GENE ID: 8624

---

## Background

**REFERENCES:** 1) Kugathasan S, Baldassano RN, Bradfield JP, Sleiman PM, Imielinski M, Guthery SL, Cucchiara S, Kim CE, Frackelton EC, Annaiah K, Glessner JT, Santa E, Willson T, Eckert AW, Bonkowski E, Shaner JL, Smith RM, Otieno FG, Peterson N, Abrams DJ, Chiavacci RM, Grundmeier R, Mamula P, Tomer G, Piccoli DA, Monos DS, Annese V, Denson LA, Grant SF, Hakonarson H. Loci on 20q13 and 21q22 are associated with pediatric-onset inflammatory bowel disease. Nat Genet. 2008 Aug 31.

---

FOR RESEARCH USE ONLY

December 13, 2016