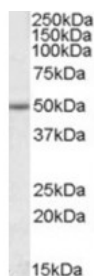




EVL Antibody

CATALOG NUMBER: 42-070



Western blot analysis of EVL in Jurkat lysate (35 ug protein in RIPA buffer) using EVL Antibody at 1 ug/mL.

Specifications

SPECIES REACTIVITY:	Human
TESTED APPLICATIONS:	ELISA, WB
APPLICATIONS:	ELISA: Antibody detection limit dilution 1:8000. Western Blot: Approximately 50 kDa band observed in Jurkat lysate (calculated MW of 44.8 kDa according to NP_057421.1). Recommended concentration: 1-3 ug/mL.
POSITIVE CONTROL:	1) Cat. No. 1205 - Jurkat Cell Lysate
IMMUNOGEN:	EVL antibody was raised against a 13 amino acid synthetic peptide near the internal region of EVL.
HOST SPECIES:	Goat

Properties

PURIFICATION:	EVL antibody was purified from goat serum by ammonium sulphate precipitation followed by antigen affinity chromatography using the immunizing peptide.
PHYSICAL STATE:	Liquid
BUFFER:	EVL antibody is supplied in Tris saline, 0.02% sodium azide, pH 7.3 with 0.5% bovine serum albumin.
CONCENTRATION:	500 ug/mL
STORAGE CONDITIONS:	Aliquot and store at -20°C. Minimize freezing and thawing.
CLONALITY:	Polyclonal
CONJUGATE:	Unconjugated

Additional Info

ALTERNATE NAMES:	RNB6, Enah/Vasp-like, EVL, RNB6
ACCESSION NO.:	NP_057421.1
PROTEIN GI NO.:	7706687
OFFICIAL SYMBOL:	EVL
GENE ID:	51466

Background

REFERENCES:

1) Dent EW, Kwiatkowski AV, Mebane LM, Philippar U, Barzik M, Robinson DA, Gupton S, Van Veen JE, Furman C, Zhang J, Alberts AS, Mori S, Gertler FB. Filopodia are required for cortical neurite initiation. *Nat Cell Biol.* 2007 Dec;9(12):1347-59. Epub 2007 Nov 18.

FOR RESEARCH USE ONLY

December 13, 2016