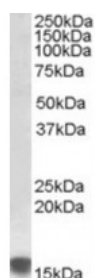




## SRXN1 Antibody

CATALOG NUMBER: 42-048



Western blot analysis of SRXN1 in human kidney lysate (35 ug protein in RIPA buffer) using SRXN1 Antibody at 0.5 ug/mL.

### Specifications

<b>SPECIES REACTIVITY:</b>	Human
<b>TESTED APPLICATIONS:</b>	ELISA, WB
<b>APPLICATIONS:</b>	ELISA: Antibody detection limit dilution 1:32000. Western Blot: Approximately 16 kDa band observed in human colon and kidney lysates (calculated MW of 14.3 kDa according to NP_542763.1). Recommended concentration: 0.5-1.5 ug/mL.
<b>POSITIVE CONTROL:</b>	1) Cat. No. 1305 - Human Kidney Tissue Lysate
<b>IMMUNOGEN:</b>	SRXN1 antibody was raised against a 14 amino acid synthetic peptide near the internal region of SRXN1.
<b>HOST SPECIES:</b>	Goat

### Properties

<b>PURIFICATION:</b>	SRXN1 antibody was purified from goat serum by ammonium sulphate precipitation followed by antigen affinity chromatography using the immunizing peptide.
<b>PHYSICAL STATE:</b>	Liquid
<b>BUFFER:</b>	SRXN1 antibody is supplied in Tris saline, 0.02% sodium azide, pH 7.3 with 0.5% bovine serum albumin.
<b>CONCENTRATION:</b>	500 ug/mL
<b>STORAGE CONDITIONS:</b>	Aliquot and store at -20°C. Minimize freezing and thawing.
<b>CLONALITY:</b>	Polyclonal
<b>CONJUGATE:</b>	Unconjugated

### Additional Info

<b>ALTERNATE NAMES:</b>	sulfiredoxin 1 homolog, dJ850E9.2, YKL086W, SRX1, Npn3, C20orf139, sulfiredoxin 1 homolog (S. cerevisiae), SRXN1, SRX
<b>ACCESSION NO.:</b>	NP_542763.1
<b>PROTEIN GI NO.:</b>	22129778
<b>OFFICIAL SYMBOL:</b>	SRXN1
<b>GENE ID:</b>	140809

## Background

**REFERENCES:** 1) Jönsson TJ, Johnson LC, Lowther WT. Structure of the sulphiredoxin-peroxiredoxin complex reveals an essential repair embrace. *Nature*. 2008 Jan 3;451(7174):98-101.

---

**FOR RESEARCH USE ONLY**

December 13, 2016