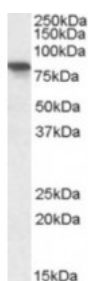




## XPNPEP1 Antibody

CATALOG NUMBER: 42-013



Western blot analysis of XPNPEP1 in human pancreas lysate (35 ug protein in RIPA buffer) using XPNPEP1 Antibody at 0.3 ug/mL.

### Specifications

<b>SPECIES REACTIVITY:</b>	Human
<b>TESTED APPLICATIONS:</b>	ELISA, WB
<b>APPLICATIONS:</b>	ELISA: Antibody detection limit dilution 1:32000. Western Blot: Approximately 80 kDa band observed in human heart, skeletal muscle and pancreas lysates (calculated MW of 69.9 kDa according to NP_065116.2). Recommended concentration: 0.3-1 ug/mL.
<b>POSITIVE CONTROL:</b>	1) Cat. No. 1307 - Human Pancreas Tissue Lysate
<b>IMMUNOGEN:</b>	XPNPEP1 antibody was raised against a 12 amino acid synthetic peptide near the C-Terminus of XPNPEP1.
<b>HOST SPECIES:</b>	Goat

### Properties

<b>PURIFICATION:</b>	XPNPEP1 antibody was purified from goat serum by ammonium sulphate precipitation followed by antigen affinity chromatography using the immunizing peptide.
<b>PHYSICAL STATE:</b>	Liquid
<b>BUFFER:</b>	XPNPEP1 antibody is supplied in Tris saline, 0.02% sodium azide, pH 7.3 with 0.5% bovine serum albumin.
<b>CONCENTRATION:</b>	500 ug/mL
<b>STORAGE CONDITIONS:</b>	Aliquot and store at -20°C. Minimize freezing and thawing.
<b>CLONALITY:</b>	Polyclonal
<b>CONJUGATE:</b>	Unconjugated

### Additional Info

<b>ALTERNATE NAMES:</b>	XPNPEP1, X-prolyl aminopeptidase (aminopeptidase P) 1, soluble, SAMP, XPNPEP, XPNPEPL, XPNPEPL1, OTTHUMP00000020457, OTTHUMP00000058856, soluble (SAMP, XPNPEPL), X-prolyl aminopeptidase (aminopeptidase P)-like, APP1
<b>ACCESSION NO.:</b>	NP_065116.2
<b>PROTEIN GI NO.:</b>	21359929
<b>OFFICIAL SYMBOL:</b>	XPNPEP1

---

<b>GENE ID:</b>	7511
-----------------	------

---

### Background

**REFERENCES:** 1) Gevaert K, Goethals M, Martens L, Van Damme J, Staes A, Thomas GR, Vandekerckhove J. Exploring proteomes and analyzing protein processing by mass spectrometric identification of sorted N-terminal peptides. Nature biotechnology 2003 May 21 (5): 566-9.

---

**FOR RESEARCH USE ONLY**

December 13, 2016