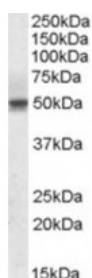




SEPT6 Antibody

CATALOG NUMBER: 42-008



Western blot analysis of 40427 in human testis lysate (35 ug protein in RIPA buffer) using SEPT6 Antibody at 1 ug/mL.

Specifications

SPECIES REACTIVITY:	Human
TESTED APPLICATIONS:	ELISA, WB
APPLICATIONS:	ELISA: Antibody detection limit dilution 1:4000. Western Blot: Approximately 50 kDa band observed in human testis, thyroid gland and MOLT4 cell lysates (calculated MW of 49.7 kDa according to NP_055944.2). Recommended concentration: 0.03-1 ug/mL.
POSITIVE CONTROL:	1) Cat. No. 1313 - Human Testis Tissue Lysate
SPECIFICITY:	This antibody is expected to recognize the reported isoforms NP_665798.1, NP_055944.2 and NP_665801.1. Reported variants NP_665799.1 and NP_665798.1 represent identical protein.
IMMUNOGEN:	SEPT6 antibody was raised against a 12 amino acid synthetic peptide near the internal region of 41158.
HOST SPECIES:	Goat

Properties

PURIFICATION:	SEPT6 antibody was purified from goat serum by ammonium sulphate precipitation followed by antigen affinity chromatography using the immunizing peptide.
PHYSICAL STATE:	Liquid
BUFFER:	SEPT6 antibody is supplied in Tris saline, 0.02% sodium azide, pH 7.3 with 0.5% bovine serum albumin.
CONCENTRATION:	500 ug/mL
STORAGE CONDITIONS:	Aliquot and store at -20°C. Minimize freezing and thawing.
CLONALITY:	Polyclonal
CONJUGATE:	Unconjugated

Additional Info

ALTERNATE NAMES:	SEPT6, septin 6, KIAA0128, MGC16619, MGC20339, SEP2, SEPT2, septin 2, RP5-876A24.2
ACCESSION NO.:	NP_665798.1, NP_055944.2, NP_665801.1
PROTEIN GI NO.:	22035577
OFFICIAL SYMBOL:	38961

GENE ID: 23157

Background

REFERENCES: 1) Kremer BE, Adang LA, Macara IG. Septins regulate actin organization and cell-cycle arrest through nuclear accumulation of NCK mediated by SOCS7. Cell. 2007 Sep 7;130(5):837-50.

FOR RESEARCH USE ONLY

December 13, 2016