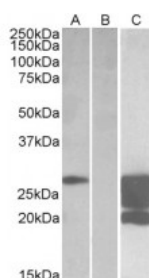




GM2A Antibody

CATALOG NUMBER: 42-412



HEK293 lysate (10ug protein in RIPA buffer) overexpressing Human GM2A with DYKDDDDK tag probed with antibody (1.0ug/ml) in Lane A and probed with anti-DYKDDDDK Tag (1/30000) in lane C. Mock-transfected HEK293 probed with antibody (1mg/ml) in Lane B. Primar



Western Blot (0.3ug/ml) staining of Rat Kidney lysate (35ug protein in RIPA buffer). Primary incubation was 1 hour. Detected by chemiluminescence.

Specifications

SPECIES REACTIVITY:	Human, Rat
TESTED APPLICATIONS:	ELISA, WB
APPLICATIONS:	ELISA: antibody detection limit dilution 1:4000. Western Blot: In transfected HEK293 transiently expressing full-length Human GM2A (myc and DYKDDDDK tagged), a band of approx. 28kDa was observed. No bands were observed in mock-transfected HEK293 and the same band was observed using anti-DYKDDDDK tag an
POSITIVE CONTROL:	1) Transfected HEK293
SPECIFICITY:	This antibody is expected to recognize isoform 1 (NP_000396.2) only.
IMMUNOGEN:	GM2A antibody was raised against a 12 amino acid synthetic peptide near the internal region of GM2A (aa 164-175).
HOST SPECIES:	Goat

Properties

PURIFICATION:	GM2A antibody was purified from goat serum by ammonium sulphate precipitation followed by antigen affinity chromatography using the immunizing peptide.
PHYSICAL STATE:	Liquid
BUFFER:	GM2A antibody is supplied in Tris saline, 0.02% sodium azide, pH 7.3 with 0.5% bovine serum albumin.
CONCENTRATION:	500 ug/mL
STORAGE CONDITIONS:	Aliquot and store at -20°C. Minimize freezing and thawing.
CLONALITY:	Polyclonal
CONJUGATE:	Unconjugated

Additional Info

ALTERNATE NAMES:	GM2A, sphingolipid activator protein 3, SAP-3, GM2 ganglioside activator, cerebroside sulfate activator protein,
-------------------------	------------------------------------------------------------------------------------------------------------------

	GM2-AP
ACCESSION NO.:	NP_000396.2
PROTEIN GI NO.:	39995109
OFFICIAL SYMBOL:	GM2A
GENE ID:	2760

Background

FOR RESEARCH USE ONLY

December 13, 2016