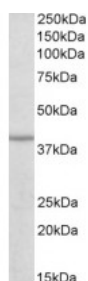


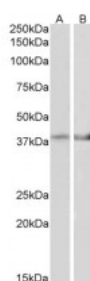


## IDH3B Antibody

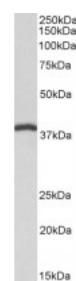
CATALOG NUMBER: 42-380



Western Blot (0.3ug/ml) staining of Human Skeletal muscle lysate (35ug protein in RIPA buffer). Primary incubation was 1 hour. Detected by chemiluminescence.



Western Blot (2ug/ml) staining of Mouse Heart (A) and Mouse Muscle (B) lysate (35ug protein in RIPA buffer). Primary incubation was 1 hour. Detected by chemiluminescence.



Western Blot (0.1ug/ml) staining of Pig Heart lysate (35ug protein in RIPA buffer). Primary incubation was 1 hour. Detected by chemiluminescence.

### Specifications

|                             |   |
|-----------------------------|---|
| <b>SPECIES REACTIVITY:</b>  | Human, Mouse, Pig, Rat  |
| <b>TESTED APPLICATIONS:</b> | ELISA, WB   |
| <b>APPLICATIONS:</b>        | ELISA: antibody detection limit dilution 1:1000. Western Blot: Approx 39kDa band observed in Mouse, Rat and Pig Heart lysates and in Human and Mouse Skeletal Muscle lysates (calculated MW of 41.9kDa according to NP_777280.1). Recommended concentration: 0.3-1ug/ml.                                      |
| <b>POSITIVE CONTROL:</b>    | 1) Cat. No. 1301 - Human Heart Tissue Lysate<br>Cat. No. 1375 - Human Skeletal Muscle Tissue Lysate<br>2) Cat. No. 1401 - Mouse Heart Tissue Lysate<br>Cat. No. 1407 - Mouse Skeletal Muscle Tissue Lysate<br>3) Cat. No. 1461 - Rat Heart Tissue Lysate<br>Cat. No. 1467 - Rat Skeletal Muscle Tissue Lysate |
| <b>SPECIFICITY:</b>         | This antibody is expected to recognize isoform a (NP_008830.2) and isoform b (NP_777280.1).   |
| <b>IMMUNOGEN:</b>           | IDH3B antibody was raised against a amino acid synthetic peptide near the internal region (near N-Terminus) of IDH3B (aa 33-46).  |
| <b>HOST SPECIES:</b>        | Goat  |

### Properties

|                            |  |
|----------------------------|--|
| <b>PURIFICATION:</b>       | IDH3B antibody was purified from goat serum by ammonium sulphate precipitation followed by antigen affinity chromatography using the immunizing peptide. |
| <b>PHYSICAL STATE:</b>     | Liquid   |
| <b>BUFFER:</b>             | IDH3B antibody is supplied in Tris saline, 0.02% sodium azide, pH 7.3 with 0.5% bovine serum albumin.  |
| <b>CONCENTRATION:</b>      | 500 ug/mL  |
| <b>STORAGE CONDITIONS:</b> | Aliquot and store at -20°C. Minimize freezing and thawing.   |
| <b>CLONALITY:</b>          | Polyclonal   |
| <b>CONJUGATE:</b>          | Unconjugated   |

**Additional Info**

|                  |  |
|------------------|--|
| ALTERNATE NAMES: | isocitric dehydrogenase subunit beta, isocitrate dehydrogenase, NAD(+)-specific, mitochondrial, beta subunit, isocitrate dehydrogenase [NAD] subunit beta, NAD+-specific isocitrate dehydrogenase beta, NAD+-specific isocitrate dehydrogenase b subunit, NAD+-specific ICDH, NAD(+)-specific ICDH subunit beta, RP46, MGC903, H-IDHB, FLJ11043, isocitrate dehydrogenase 3 (NAD+) beta, IDH3B |
| ACCESSION NO.:   | NP_008830.2, NP_777280.1   |
| PROTEIN GI NO.:  | 28178821   |
| OFFICIAL SYMBOL: | IDH3B  |
| GENE ID:         | 3420   |

**Background**

FOR RESEARCH USE ONLY

December 13, 2016