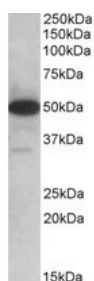




TXNDC5 Antibody

CATALOG NUMBER: 42-369



Western blot analysis of TXNDC5 in human Lymph Nodes lysate (35 ug protein in RIPA buffer) using TXNDC5 Antibody at 0.1 ug/mL.

Specifications

SPECIES REACTIVITY:	Human
TESTED APPLICATIONS:	ELISA, WB
APPLICATIONS:	ELISA: Antibody detection limit dilution 1:16000. Western Blot: Approximately 50 kDa plus faint 35 kDa bands observed in human lymph nodes lysates (calculated MW of 47.6 kDa according to NP_110437.2) and of 36.2 kDa according to NP_001139021.1. Recommended concentration: 0.1-0.3 ug/mL.
POSITIVE CONTROL:	1) Cat. No. 1369 - Human Lymph node Tissue Lysate
SPECIFICITY:	This antibody is expected to recognize both reported isoforms (NP_110437.2; NP_001139021.1).
IMMUNOGEN:	TXNDC5 antibody was raised against a amino acid synthetic peptide near the internal region of TXNDC5 (aa 281-295).
HOST SPECIES:	Goat

Properties

PURIFICATION:	TXNDC5 antibody was purified from goat serum by ammonium sulphate precipitation followed by antigen affinity chromatography using the immunizing peptide.
PHYSICAL STATE:	Liquid
BUFFER:	TXNDC5 antibody is supplied in Tris saline, 0.02% sodium azide, pH 7.3 with 0.5% bovine serum albumin.
CONCENTRATION:	500 ug/mL
STORAGE CONDITIONS:	Aliquot and store at -20°C. Minimize freezing and thawing.
CLONALITY:	Polyclonal
CONJUGATE:	Unconjugated

Additional Info

ALTERNATE NAMES:	thioredoxin-like protein p46, thioredoxin related protein, thioredoxin domain-containing protein 5, protein disulfide isomerase family A, member 15, endothelial protein disulphide isomerase, endoplasmic reticulum resident protein 46, endoplasmic reticulum protein ERp46, ER protein 46, UNQ364, PDIA15, MGC3178, Hcc-2, EndoPDI, ERP46, thioredoxin domain containing 5 (endoplasmic reticulum), TXNDC5, TLP46, UNQ364/PRO700
-------------------------	---

ACCESSION NO.:	NP_110437.2, NP_001139021.1
PROTEIN GI NO.:	42794771
OFFICIAL SYMBOL:	TXNDC5
GENE ID:	81567

Background

FOR RESEARCH USE ONLY

December 13, 2016