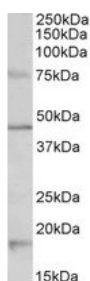




Htr1a Antibody

CATALOG NUMBER: 42-341



Western blot analysis of Htr1a in mouse brain lysate (35 ug protein in RIPA buffer) using Htr1a Antibody at 1 ug/mL.

Specifications

SPECIES REACTIVITY:	Mouse
TESTED APPLICATIONS:	ELISA, WB
APPLICATIONS:	ELISA: Antibody detection limit dilution 1:128000. Western Blot: Approximately 45 kDa band observed in mouse brain lysates (calculated MW of 46.2 kDa according to mouse NP_032334.2). Recommended concentration: 1-3 ug/mL. Additional bands of 75 and 18 kDa of unknown identity were consistently observed. These bands were successfully blocked by incubation with the immunizing peptide.
POSITIVE CONTROL:	1) Cat. No. 1403 - Mouse Brain Tissue Lysate
IMMUNOGEN:	Htr1a antibody was raised against a 13 amino acid synthetic peptide near the internal region of Htr1a (mouse).
HOST SPECIES:	Goat

Properties

PURIFICATION:	Htr1a antibody was purified from goat serum by ammonium sulphate precipitation followed by antigen affinity chromatography using the immunizing peptide.
PHYSICAL STATE:	Liquid
BUFFER:	Htr1a antibody is supplied in Tris saline, 0.02% sodium azide, pH 7.3 with 0.5% bovine serum albumin.
CONCENTRATION:	500 ug/mL
STORAGE CONDITIONS:	Aliquot and store at -20°C. Minimize freezing and thawing.
CLONALITY:	Polyclonal
CONJUGATE:	Unconjugated

Additional Info

ALTERNATE NAMES:	serotonin receptor 1A, G-protein coupled receptor 18, 5-hydroxytryptamine receptor 1A, 5-HT1A receptor, 5-HT-1A, Gpcr18, 5-hydroxytryptamine (serotonin) receptor 1A, Htr1a, ADRB2RL1, ADRBRL1
ACCESSION NO.:	NP_032334.2
PROTEIN GI NO.:	31542972
OFFICIAL SYMBOL:	Htr1a

Background

FOR RESEARCH USE ONLY

December 13, 2016