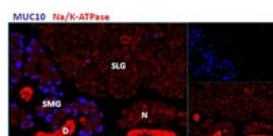




Prol1 Antibody

CATALOG NUMBER: 42-311



Prol1 Antibody at 2.9 ug/mL staining the cells of the submandibular salivary gland, but not in the sublingual salivary gland in mouse.

Specifications

SPECIES REACTIVITY:	Mouse
TESTED APPLICATIONS:	ELISA, IHC
APPLICATIONS:	ELISA: Antibody detection limit dilution 1:32000. IHC: Positive staining in the submandibular salivary gland of the mouse, while cells remain negative in the sublingual salivary gland.
IMMUNOGEN:	Prol1 antibody was raised against a 13 amino acid synthetic peptide near the internal region of Prol1.
HOST SPECIES:	Goat

Properties

PURIFICATION:	Prol1 antibody was purified from goat serum by ammonium sulphate precipitation followed by antigen affinity chromatography using the immunizing peptide.
PHYSICAL STATE:	Liquid
BUFFER:	Prol1 antibody is supplied in Tris saline, 0.02% sodium azide, pH 7.3 with 0.5% bovine serum albumin.
CONCENTRATION:	500 ug/mL
STORAGE CONDITIONS:	Aliquot and store at -20°C. Minimize freezing and thawing.
CLONALITY:	Polyclonal
CONJUGATE:	Unconjugated

Additional Info

ALTERNATE NAMES:	mucin 10, submandibular gland salivary mucin, mucin 10, Muc10, proline rich, lacrimal 1, Prol1
ACCESSION NO.:	NP_032670.2
PROTEIN GI NO.:	161086913
OFFICIAL SYMBOL:	Prol1
GENE ID:	17830 (mouse);

Background

