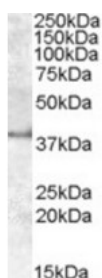




APOL6 Antibody

CATALOG NUMBER: 42-040



Western blot analysis of APOL6 in human kidney lysate (35 ug protein in RIPA buffer) using APOL6 Antibody at 1 ug/mL.

Specifications

SPECIES REACTIVITY:	Human
TESTED APPLICATIONS:	ELISA, IHC, WB
APPLICATIONS:	ELISA: Antibody detection limit dilution 1:8000. Western Blot: Approximately 38 kDa band observed in human kidney lysates (calculated MW of 38.1 kDa according to NP_085144.1). Recommended concentration: 1-3 ug/mL. IHC: In paraffin embedded Human Liver shows textured cytoplasm staining in hepatocytes. Recommended concentration, 5-10ug/ml.
POSITIVE CONTROL:	1) Cat. No. 1305 - Human Kidney Tissue Lysate
IMMUNOGEN:	APOL6 antibody was raised against a 12 amino acid synthetic peptide near the internal region (near N-Terminus) of APOL6 (near N-Terminus).
HOST SPECIES:	Goat

Properties

PURIFICATION:	APOL6 antibody was purified from goat serum by ammonium sulphate precipitation followed by antigen affinity chromatography using the immunizing peptide.
PHYSICAL STATE:	Liquid
BUFFER:	APOL6 antibody is supplied in Tris saline, 0.02% sodium azide, pH 7.3 with 0.5% bovine serum albumin.
CONCENTRATION:	500 ug/mL
STORAGE CONDITIONS:	Aliquot and store at -20°C. Minimize freezing and thawing.
CLONALITY:	Polyclonal
CONJUGATE:	Unconjugated

Additional Info

ALTERNATE NAMES:	apolipoprotein L6, apolipoprotein L-VI, MGC57495, FLJ90164, FLJ38562, DKFZp667M075, APOL-VI, apolipoprotein L, 6, APOL6, APOLVI
ACCESSION NO.:	NP_085144.1
PROTEIN GI NO.:	13449281
OFFICIAL SYMBOL:	APOL6

GENE ID: 80830

Background

REFERENCES: 1) Monajemi H, Fontijn RD, Pannekoek H, Horrevoets AJ. The apolipoprotein L gene cluster has emerged recently in evolution and is expressed in human vascular tissue. *Genomics*. 2002 Apr;79(4):539-46.

FOR RESEARCH USE ONLY

December 13, 2016