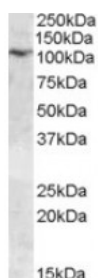




## TRPC6 Antibody

CATALOG NUMBER: 42-754



Western Blot (0.03ug/ml) staining of Human Placenta lysate (35ug protein in RIPA buffer). Primary incubation was 1 hour. Detected by chemiluminescence.

### Specifications

|                             |  |
|-----------------------------|--|
| <b>SPECIES REACTIVITY:</b>  | Human  |
| <b>TESTED APPLICATIONS:</b> | ELISA, WB  |
| <b>APPLICATIONS:</b>        | ELISA: antibody detection limit dilution 1:128000. Western Blot: Approx. 110kDa band observed in Human Placenta lysates (calculated MW of 106Da according to NP_004612.2). Recommended concentration: 0.03-0.1ug/ml. |
| <b>POSITIVE CONTROL:</b>    | 1) Cat. No. 1309 - Human Placenta Lysate   |
| <b>IMMUNOGEN:</b>           | TRPC6 antibody was raised against a 14 amino acid synthetic peptide near the C-Terminus of TRPC6.  |
| <b>HOST SPECIES:</b>        | Goat   |

### Properties

|                            |  |
|----------------------------|--|
| <b>PURIFICATION:</b>       | Antibody was purified from goat serum by ammonium sulphate precipitation followed by antigen affinity chromatography using the immunizing peptide. |
| <b>PHYSICAL STATE:</b>     | Liquid   |
| <b>BUFFER:</b>             | TRPC6 antibody is supplied in Tris saline, 0.02% sodium azide, pH 7.3 with 0.5% bovine serum albumin.  |
| <b>CONCENTRATION:</b>      | 500 ug/mL  |
| <b>STORAGE CONDITIONS:</b> | Aliquot and store at -20°C. Minimize freezing and thawing.   |
| <b>CLONALITY:</b>          | Polyclonal   |
| <b>CONJUGATE:</b>          | Unconjugated   |

### Additional Info

|                         |  |
|-------------------------|--|
| <b>ALTERNATE NAMES:</b> | transient receptor potential channel 6, TRP6, FSGS2, FLJ14863, FLJ11098, transient receptor potential cation channel, subfamily C, member 6, TRPC6 |
| <b>ACCESSION NO.:</b>   | NP_004612.2  |
| <b>PROTEIN GI NO.:</b>  | 5730102  |
| <b>OFFICIAL SYMBOL:</b> | TRPC6  |

Background

FOR RESEARCH USE ONLY

December 13, 2016