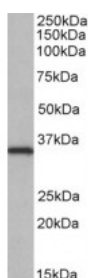




NEK7 Antibody

CATALOG NUMBER: 42-700



Western Blot (0.05ug/ml) staining of HeLa lysate (35ug protein in RIPA buffer). Primary incubation was 1 hour. Detected by chemiluminescence.

Specifications

SPECIES REACTIVITY:	Human
TESTED APPLICATIONS:	ELISA, WB
APPLICATIONS:	ELISA: antibody detection limit dilution 1:64000. Western Blot: Approx 35kDa band observed in lysates of cell line HeLa (calculated MW of 34.6kDa according to NP_598001.1). Recommended concentration: 0.05-0.2ug/ml.
POSITIVE CONTROL:	1) Cat. No. 1201 - HeLa Cell Lysate
IMMUNOGEN:	NEK7 antibody was raised against an 11 amino acid synthetic peptide near the internal region of NEK7.
HOST SPECIES:	Goat

Properties

PURIFICATION:	NEK7 antibody was purified from goat serum by ammonium sulphate precipitation followed by antigen affinity chromatography using the immunizing peptide.
PHYSICAL STATE:	Liquid
BUFFER:	NEK7 antibody is supplied in Tris saline, 0.02% sodium azide, pH 7.3 with 0.5% bovine serum albumin.
CONCENTRATION:	500 ug/mL
STORAGE CONDITIONS:	Aliquot and store at -20°C. Minimize freezing and thawing.
CLONALITY:	Polyclonal
CONJUGATE:	Unconjugated

Additional Info

ALTERNATE NAMES:	NEK7, NIMA-related kinase 7, NIMA (never in mitosis gene a)-related kinase 7,
ACCESSION NO.:	NP_598001.1
PROTEIN GI NO.:	19424132
OFFICIAL SYMBOL:	NEK7
GENE ID:	140609

FOR RESEARCH USE ONLY

December 13, 2016