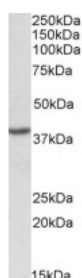


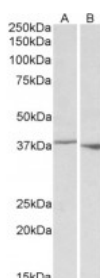


## PCBP1 Antibody

CATALOG NUMBER: 42-695



Western Blot (0.1ug/ml) staining of PBMC lysate (35ug protein in RIPA buffer). Primary incubation was 1 hour. Detected by chemiluminescence.



Western Blot (0.1ug/ml) staining of Rat Spleen (A) and Thymus (B) lysate (35ug protein in RIPA buffer). Primary incubation was 1 hour. Detected by chemiluminescence.

### Specifications

<b>SPECIES REACTIVITY:</b>	Human, Rat
<b>TESTED APPLICATIONS:</b>	ELISA, WB
<b>APPLICATIONS:</b>	ELISA: antibody detection limit dilution 1:8000. Western Blot: Approx 38kDa band observed in Human Peripheral Blood Nucleocytes lysates (calculated MW of 37.5kDa according to NP_006187.2). The 38kDa was also observed in Rat Spleen while a 37kDa band was observed in Rat Thymus. Recommended concentration
<b>POSITIVE CONTROL:</b>	1) Cat. No. 1371 - Human peripheral blood leukocyte (PBL) Lysate
<b>IMMUNOGEN:</b>	PCBP1 antibody was raised against a 12 amino acid synthetic peptide near the internal region of PCBP1 (aa 223-234).
<b>HOST SPECIES:</b>	Goat

### Properties

<b>PURIFICATION:</b>	PCBP1 antibody was purified from goat serum by ammonium sulphate precipitation followed by antigen affinity chromatography using the immunizing peptide.
<b>PHYSICAL STATE:</b>	Liquid
<b>BUFFER:</b>	PCBP1 antibody is supplied in Tris saline, 0.02% sodium azide, pH 7.3 with 0.5% bovine serum albumin.
<b>CONCENTRATION:</b>	500 ug/mL
<b>STORAGE CONDITIONS:</b>	Aliquot and store at -20°C. Minimize freezing and thawing.
<b>CLONALITY:</b>	Polyclonal
<b>CONJUGATE:</b>	Unconjugated

### Additional Info

<b>ALTERNATE NAMES:</b>	PCBP1, poly(rC) binding protein 1, nucleic acid binding protein sub 2.3, HNRPX, HNRPE1, hnRNP-X, hnRNP-E1, heterogenous nuclear ribonucleoprotein X, heterogenous nuclear ribonucleoprotein E1, heterogeneous nuclear ribonucleoprotein E1, alpha-CP1, HEL-S-85
<b>ACCESSION NO.:</b>	NP_006187.2

PROTEIN GI NO.: 222352151

OFFICIAL SYMBOL: PCBP1

GENE ID: 5093

## Background

FOR RESEARCH USE ONLY

December 13, 2016