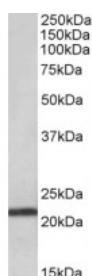




TMEM205 Antibody

CATALOG NUMBER: 42-692



Western Blot (0.03ug/ml) staining of Human Pancreas lysate (35ug protein in RIPA buffer). Primary incubation was 1 hour. Detected by chemiluminescence.

Specifications

SPECIES REACTIVITY:	Human
TESTED APPLICATIONS:	ELISA, WB
APPLICATIONS:	ELISA: antibody detection limit dilution 1:16000. Western Blot: Approx 22kDa band observed in Human Pancreas lysates (calculated MW of 21.2kDa according to NP_212133.1). Recommended concentration: 0.03-0.1ug/ml.
POSITIVE CONTROL:	1) Cat. No. 1307 - Human Pancreas Tissue Lysate
SPECIFICITY:	Reported variants represent identical protein: NP_940938.1, NP_212133.1, NP_001138888.1
IMMUNOGEN:	TMEM205 antibody was raised against a 10 amino acid synthetic peptide near the internal region of TMEM205 (aa 137-146).
HOST SPECIES:	Goat

Properties

PURIFICATION:	TMEM205 antibody was purified from goat serum by ammonium sulphate precipitation followed by antigen affinity chromatography using the immunizing peptide.
PHYSICAL STATE:	Liquid
BUFFER:	TMEM205 antibody is supplied in Tris saline, 0.02% sodium azide, pH 7.3 with 0.5% bovine serum albumin.
CONCENTRATION:	500 ug/mL
STORAGE CONDITIONS:	Aliquot and store at -20°C. Minimize freezing and thawing.
CLONALITY:	Polyclonal
CONJUGATE:	Unconjugated

Additional Info

ALTERNATE NAMES:	TMEM205, UNQ501, transmembrane protein 205, MGC3205, MGC110858, MBC3205
ACCESSION NO.:	NP_212133.1
PROTEIN GI NO.:	15529966
OFFICIAL SYMBOL:	TMEM205

Background

FOR RESEARCH USE ONLY

December 13, 2016