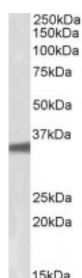


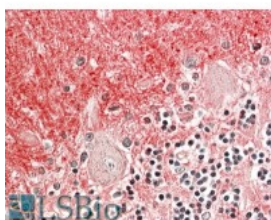


GNB3 Antibody

CATALOG NUMBER: 42-684



Western Blot (0.1ug/ml) staining of HepG2 lysate (35ug protein in RIPA buffer). Primary incubation was 1 hour. Detected by chemiluminescence.



Immunohistochemistry (3.8ug/ml) staining of paraffin embedded Human Cerebellum. Steamed antigen retrieval with citrate buffer pH 6, AP-staining.

Specifications

SPECIES REACTIVITY:	Human
TESTED APPLICATIONS:	ELISA, IHC-P, WB
APPLICATIONS:	ELISA: antibody detection limit dilution 1:16000. Western Blot: Approx 35kDa band observed in lysates of cell line HepG2 (calculated MW of 37.2kDa according to NP_002066.1. Recommended concentration: 0.1-0.3ug/ml. Immunohistochemistry: In paraffin embedded Human Cerebellum shows strong axonal staining in the Molecular layer and less so in the Granular layer. Recommended concentration, 3-5ug/ml.
POSITIVE CONTROL:	1) Cat. No. 1211 - HepG2 Cell Lysate
SPECIFICITY:	This antibody is expected to recognize GNB3 & GNB4 (GeneID: 2784, 59345; ProteinID: NP_002066.1; NP_067642.1).
IMMUNOGEN:	GNB3 antibody was raised against a 13 amino acid synthetic peptide near the internal region of GNB3.
HOST SPECIES:	Goat

Properties

PURIFICATION:	GNB3 antibody was purified from goat serum by ammonium sulphate precipitation followed by antigen affinity chromatography using the immunizing peptide.
PHYSICAL STATE:	Liquid
BUFFER:	GNB3 antibody is supplied in Tris saline, 0.02% sodium azide, pH 7.3 with 0.5% bovine serum albumin.
CONCENTRATION:	500 ug/mL
STORAGE CONDITIONS:	Aliquot and store at -20°C. Minimize freezing and thawing.
CLONALITY:	Polyclonal
CONJUGATE:	Unconjugated

Additional Info

ALTERNATE NAMES:	GNB3, guanine nucleotide-binding protein, beta-3, guanine nucleotide-binding protein G(I)/G(S)/G(T) beta subunit 3, guanine nucleotide binding protein (G protein), beta polypeptide 3, GTP-binding regulatory protein beta-3 chain,
-------------------------	--

	G protein, beta-3 subunit,
ACCESSION NO.:	NP_002066.1, NP_067642.1
PROTEIN GI NO.:	4504053
OFFICIAL SYMBOL:	GNB3
GENE ID:	2784; 59345

Background

FOR RESEARCH USE ONLY

December 13, 2016