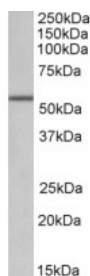


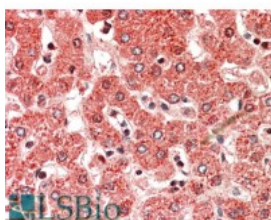


ALDH6A1 Antibody

CATALOG NUMBER: 42-678



Western Blot (0.1ug/ml) staining of Mouse Kidney lysate (35ug protein in RIPA buffer). Primary incubation was 1 hour. Detected by chemiluminescence.



Immunohistochemistry (5ug/ml) staining of paraffin embedded Human Liver. Steamed antigen retrieval with citrate buffer pH 6, AP-staining.

Specifications

SPECIES REACTIVITY:

TESTED APPLICATIONS:

APPLICATIONS: ELISA: antibody detection limit dilution 1:32000. Western Blot: Approx 55kDa band observed in Human, Mouse and Rat Kidney lysates (calculated MW of 57.8kDa according to NP_005580.1). Recommended concentration: 0.1-0.3ug/ml. Immunohistochemistry: In paraffin embedded Human Liver shows textured staining of the cytoplasm consistent with mitochondria. Recommended concentration, 5-10ug/ml.

POSITIVE CONTROL:
1) Cat. No. 1305 - Human Kidney Tissue Lysate
2) Cat. No. 1405 - Mouse Kidney Tissue Lysate
3) Cat. No. 1465 - Rat Kidney Tissue Lysate

IMMUNOGEN: ALDH6A1 antibody was raised against a 10 amino acid synthetic peptide near the internal region of ALDH6A1 (aa 487-496).

HOST SPECIES: Goat

Properties

PURIFICATION: ALDH6A1 antibody was purified from goat serum by ammonium sulphate precipitation followed by antigen affinity chromatography using the immunizing peptide.

PHYSICAL STATE: Liquid

BUFFER: ALDH6A1 antibody is supplied in Tris saline, 0.02% sodium azide, pH 7.3 with 0.5% bovine serum albumin.

CONCENTRATION: 500 ug/mL

STORAGE CONDITIONS: Aliquot and store at -20°C. Minimize freezing and thawing.

CLONALITY: Polyclonal

CONJUGATE: Unconjugated

Additional Info

ALTERNATE NAMES: ALDH6A1, MMSDH, MMSADHA, mitochondrial acylating methylmalonate-semialdehyde dehydrogenase, MGC40271, aldehyde dehydrogenase 6A1, aldehyde dehydrogenase 6 family, member A1

ACCESSION NO.: NP_005580.1

PROTEIN GI NO.: 11095441

OFFICIAL SYMBOL: ALDH6A1

GENE ID: 4329

Background

FOR RESEARCH USE ONLY

December 13, 2016