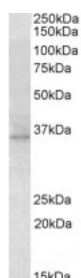


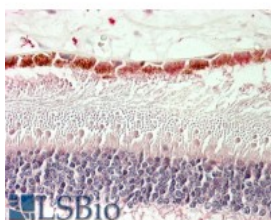


RDH5 Antibody

CATALOG NUMBER: 42-601



Western Blot (2ug/ml) staining of Mouse Eye lysate (35ug protein in RIPA buffer). Primary incubation was 1 hour. Detected by chemiluminescence.



Immunohistochemistry (5ug/ml) staining of paraffin embedded Human Retina. Steamed antigen retrieval with citrate buffer pH 6, AP-staining.

Specifications

SPECIES REACTIVITY:	Human, Mouse
TESTED APPLICATIONS:	ELISA, IHC-P, WB
APPLICATIONS:	ELISA: antibody detection limit dilution 1:8000. Western Blot: Approx 35kDa band observed in Mouse Eye lysates (calculated MW of 34.8kDa according to Mouse NP_598767.1). Recommended concentration: 2-4ug/ml. Immunohistochemistry: In paraffin embedded Human Retina shows staining of the Ganglion Cell Layer. Recommended concentration, 5-10ug/ml.
POSITIVE CONTROL:	1) Cat. No. 1420 - Mouse Eye Tissue Lysate
IMMUNOGEN:	RDH5 antibody was raised against a 13 amino acid synthetic peptide near the internal region of RDH5 (aa 19-31).
HOST SPECIES:	Goat

Properties

PURIFICATION:	RDH5 antibody was purified from goat serum by ammonium sulphate precipitation followed by antigen affinity chromatography using the immunizing peptide.
PHYSICAL STATE:	Liquid
BUFFER:	RDH5 antibody is supplied in Tris saline, 0.02% sodium azide, pH 7.3 with 0.5% bovine serum albumin.
CONCENTRATION:	500 ug/mL
STORAGE CONDITIONS:	Aliquot and store at -20°C. Minimize freezing and thawing.
CLONALITY:	Polyclonal
CONJUGATE:	Unconjugated

Additional Info

ALTERNATE NAMES:	RDH5, short chain dehydrogenase/reductase family 9C, SDR9C5, retinol dehydrogenase 5 (11-cis/9-cis), retinol dehydrogenase 5 (11-cis and 9-cis), retinol dehydrogenase 1, RDH1, HSD17B9, FLJ97089, FLJ39337, 9-cis-retinol specific dehydrogenase, 11-cis RDH
ACCESSION NO.:	NP_002896.2

PROTEIN GI NO.: 50726952

OFFICIAL SYMBOL: RDH5

GENE ID: 5959

Background

FOR RESEARCH USE ONLY

December 13, 2016