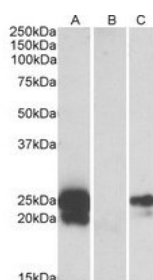




WFDC2 Antibody

CATALOG NUMBER: 42-563



HEK293 lysate (10 ug protein in RIPA buffer) overexpressing human WFDC2 with C-terminal MYC tag probed with WFDC2 Antibody at 1 ug/mL in Lane A and probed with anti-MYC Tag (1/1000) in lane C. Mock-transfected HEK293 probed with WFDC2 Antibody at 1 mg/mL in Lane B.

Specifications

SPECIES REACTIVITY:	Human
TESTED APPLICATIONS:	ELISA, WB
APPLICATIONS:	ELISA: antibody detection limit dilution 1:16000. Western Blot: In transfected HEK293 transiently expressing full-length Human WFDC2 (myc and DYKDDDDK tagged), a band of approx. 25kDa was observed. No bands were observed in mock-transfected HEK293 and the same band was observed using anti-myc tag antio
IMMUNOGEN:	WFDC2 antibody was raised against a 15 amino acid synthetic peptide near the internal region of WFDC2.
HOST SPECIES:	Goat

Properties

PURIFICATION:	WFDC2 antibody was purified from goat serum by ammonium sulphate precipitation followed by antigen affinity chromatography using the immunizing peptide.
PHYSICAL STATE:	Liquid
BUFFER:	WFDC2 antibody is supplied in Tris saline, 0.02% sodium azide, pH 7.3 with 0.5% bovine serum albumin.
CONCENTRATION:	500 ug/mL
STORAGE CONDITIONS:	Aliquot and store at -20°C. Minimize freezing and thawing.
CLONALITY:	Polyclonal
CONJUGATE:	Unconjugated

Additional Info

ALTERNATE NAMES:	WFDC2, WAP5, WAP four-disulfide core domain 2, WAP domain containing protein HE4-V4, MGC57529, major epididy, HE4, epididymis-specific, whey-acidic protein type, four-disulfide core, epididymal secretory protein E4, epididymal protein 4, EDDM4, dJ461P17.6
-------------------------	---

ACCESSION NO.: NP_006094.3

PROTEIN GI NO.: 56699495

OFFICIAL SYMBOL: WFDC2

GENE ID: 10406

Background

FOR RESEARCH USE ONLY

December 13, 2016