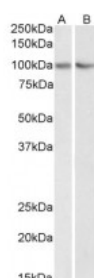




## TRIM71 Antibody

CATALOG NUMBER: 42-540



Western Blot (0.3ug/ml) staining of HEK293 (A) and NIH3T3 (B) lysate (35ug protein in RIPA buffer). Primary incubation was 1 hour. Detected by chemiluminescence.

### Specifications

<b>SPECIES REACTIVITY:</b>	Human, Mouse
<b>TESTED APPLICATIONS:</b>	ELISA, WB
<b>APPLICATIONS:</b>	ELISA: antibody detection limit dilution 1:8000. Western Blot: Approx 100kDa band observed in lysates of the cell lines 293 and NIH3T3 (calculated MW of 93.4kDa according to Human NP_001034200.1 and 92.1kDa according to Mouse NP_001035968.1). The observed molecular weight corresponds to findings with
<b>POSITIVE CONTROL:</b>	1) Cat. No. 1210 - 293 Cell Lysate 2) Cat. No. 1282 - 3T3 (NIH) Cell Lysate
<b>IMMUNOGEN:</b>	TRIM71 antibody was raised against a 13 amino acid synthetic peptide near the Internal region of TRIM71 (aa 390-402).
<b>HOST SPECIES:</b>	Goat

### Properties

<b>PURIFICATION:</b>	TRIM71 antibody was purified from goat serum by ammonium sulphate precipitation followed by antigen affinity chromatography using the immunizing peptide.
<b>PHYSICAL STATE:</b>	Liquid
<b>BUFFER:</b>	TRIM71 antibody is supplied in Tris saline, 0.02% sodium azide, pH 7.3 with 0.5% bovine serum albumin.
<b>CONCENTRATION:</b>	500 ug/mL
<b>STORAGE CONDITIONS:</b>	Aliquot and store at -20°C. Minimize freezing and thawing.
<b>CLONALITY:</b>	Polyclonal
<b>CONJUGATE:</b>	Unconjugated

### Additional Info

<b>ALTERNATE NAMES:</b>	TRIM71, tripartite motif-containing 71, LIN-41, LIN41, homolog of C. elegans Lin-41, abnormal cell LINEage LIN-41
<b>ACCESSION NO.:</b>	NP_001034200.1

PROTEIN GI NO.: 84993742

OFFICIAL SYMBOL: TRIM71

GENE ID: 131405

## Background

FOR RESEARCH USE ONLY

December 13, 2016