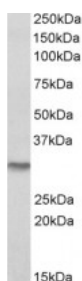




NQO1 Antibody

CATALOG NUMBER: 42-451



Western Blot (0.3ug/ml) staining of Human Kidney lysate (35ug protein in RIPA buffer). Primary incubation was 1 hour. Detected by chemiluminescence.

Specifications

SPECIES REACTIVITY:	Human
TESTED APPLICATIONS:	ELISA, WB
APPLICATIONS:	ELISA: antibody detection limit dilution 1:32000. Western Blot: Approx 30kDa band observed in Human Kidney lysates (calculated MW of 30.9kDa according to NP_000894.1). Recommended concentration: 0.3-1ug/ml.
POSITIVE CONTROL:	1) Cat. No. 1305 - Human Kidney Tissue Lysate
SPECIFICITY:	This antibody is expected to recognize reported isoform a (NP_000894.1) only.
IMMUNOGEN:	NQO1 antibody was raised against a 13 amino acid synthetic peptide near the internal region of NQO1 (isoform a).
HOST SPECIES:	Goat

Properties

PURIFICATION:	NQO1 antibody was purified from goat serum by ammonium sulphate precipitation followed by antigen affinity chromatography using the immunizing peptide.
PHYSICAL STATE:	Liquid
BUFFER:	NQO1 antibody is supplied in Tris saline, 0.02% sodium azide, pH 7.3 with 0.5% bovine serum albumin.
CONCENTRATION:	500 ug/mL
STORAGE CONDITIONS:	Aliquot and store at -20°C. Minimize freezing and thawing.
CLONALITY:	Polyclonal
CONJUGATE:	Unconjugated

Additional Info

ALTERNATE NAMES:	NAD(P)H:qui, NAD(P)H:qui oxidoreductase 1, NAD(P)H:menadione oxidoreductase 1, NAD(P)H:Qui acceptor oxidoreductase type 1, DT-diaphorase, QR1, NMORI, NMOR1, DTD, DIA4, DHQU, NAD(P)H dehydrogenase, qui 1, NQO1
ACCESSION NO.:	NP_000894.1
PROTEIN GI NO.:	4505415

OFFICIAL SYMBOL:	NQO1
GENE ID:	1728

Background

FOR RESEARCH USE ONLY

December 13, 2016