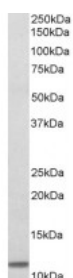




B2M Antibody

CATALOG NUMBER: 43-039



Western Blot (0.3ug/ml) staining of Human Duodenum lysate (35ug protein in RIPA buffer). Primary incubation was 1 hour. Detected by chemiluminescence.

Specifications

SPECIES REACTIVITY:	Human
TESTED APPLICATIONS:	ELISA, WB
APPLICATIONS:	ELISA: antibody detection limit dilution 1:32000. Western Blot: Approx 12kDa band observed in Human Duodenum lysates (calculated MW of 13.7kDa according to NP_004039.1). Recommended concentration: 0.3-1ug/ml.
POSITIVE CONTROL:	1) Cat. No. 1364 - Human Duodenum Tissue Lysate
PREDICTED MOLECULAR WEIGHT:	Approx 12 kDa
IMMUNOGEN:	B2M antibody was raised against a 13 amino acid peptide near the N Terminus of B2M.
HOST SPECIES:	Goat

Properties

PURIFICATION:	B2M antibody was purified from goat serum by ammonium sulphate precipitation followed by antigen affinity chromatography using the immunizing peptide.
PHYSICAL STATE:	Liquid
BUFFER:	B2M antibody is supplied in Tris saline, 0.02% sodium azide, pH 7.3 with 0.5% bovine serum albumin.
CONCENTRATION:	500 ug/mL
STORAGE CONDITIONS:	Aliquot and store at -20°C. Minimize freezing and thawing.
CLONALITY:	Polyclonal
CONJUGATE:	Unconjugated

Additional Info

ALTERNATE NAMES:	B2M, beta chain of MHC class I molecules, beta-2-microglobulin, beta-2-microglobulin, OTTHUMP00000161912 ,
ACCESSION NO.:	NP_004039.1
PROTEIN GI NO.:	4757826

OFFICIAL SYMBOL: B2M

GENE ID: 567

Background

FOR RESEARCH USE ONLY

December 13, 2016