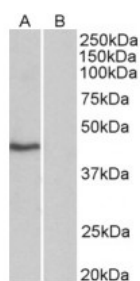




## TBP Antibody

CATALOG NUMBER: 42-997



Western Blot (0.3ug/ml) staining of HeLa nuclear (A) and cytosolic (B) lysates (35ug protein in commercial extraction buffer). Primary incubation was 1 hour. Detected by chemiluminescence.

### Specifications

<b>SPECIES REACTIVITY:</b>	Human
<b>TESTED APPLICATIONS:</b>	ELISA, WB
<b>APPLICATIONS:</b>	ELISA: antibody detection limit dilution 1:64000. Western Blot: Approx 40kDa band observed in nuclear, but not in cytosolic lysates of cell line HeLa (calculated MW of 37.7kDa according to NP_003185.1). Recommended concentration: 0.3-1ug/ml.
<b>PREDICTED MOLECULAR WEIGHT:</b>	Approx 40 kDa
<b>SPECIFICITY:</b>	This antibody is expected to recognize reported isoform 1(NP_003185.1) only.
<b>IMMUNOGEN:</b>	TBP antibody was raised against a 11 amino acid synthetic peptide near the N-Terminus of TBP (isoform1).
<b>HOST SPECIES:</b>	Goat

### Properties

<b>PURIFICATION:</b>	Antibody was purified from goat serum by ammonium sulphate precipitation followed by antigen affinity chromatography using the immunizing peptide.
<b>PHYSICAL STATE:</b>	Liquid
<b>BUFFER:</b>	TBP antibody is supplied in Tris saline, 0.02% sodium azide, pH 7.3 with 0.5% bovine serum albumin.
<b>CONCENTRATION:</b>	500 ug/mL
<b>STORAGE CONDITIONS:</b>	Aliquot and store at -20°C. Minimize freezing and thawing.
<b>CLONALITY:</b>	Polyclonal
<b>CONJUGATE:</b>	Unconjugated

### Additional Info

<b>ALTERNATE NAMES:</b>	TBP, transcription initiation factor TFIID TBP subunit, TFIID, TATA-box-binding protein, TATA-box factor, TATA-box binding protein N-terminal domain, TATA sequence-binding protein, TATA box binding protein, SCA17, MGC126055, MGC126054, MGC117320, HDL4, GTF2D1, GTF2D, TF2D
-------------------------	--

ACCESSION NO.: NP\_003185.1

PROTEIN GI NO.: 4507379

OFFICIAL SYMBOL: TBP

GENE ID: 6908

## Background

FOR RESEARCH USE ONLY

December 13, 2016