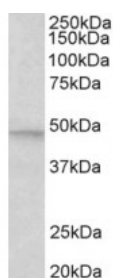




MAPK9 Antibody

CATALOG NUMBER: 42-985



Western Blot (0.5ug/ml) staining of Human Cerebellum lysate (35ug protein in RIPA buffer). Primary incubation was 1 hour. Detected by chemiluminescence.

Specifications

SPECIES REACTIVITY:	Human, Mouse
TESTED APPLICATIONS:	ELISA, WB
APPLICATIONS:	ELISA: antibody detection limit dilution 1:32000. Western Blot: Approx 48kDa band observed in Human Brain (Cerebellum) and Mouse Brain lysates (calculated MW of 48.3kDa according to NP_620709.1). Recommended concentration: 0.5-1.5ug/ml.
POSITIVE CONTROL:	1) Cat. No. 1362 - Human Cerebellum, Left Lysate Cat. No. 1363 - Human Cerebellum, Right Lysate
PREDICTED MOLECULAR WEIGHT:	Approx 48 kDa
SPECIFICITY:	This antibody is expected to recognize isoforms beta1 and beta 2 (NP_620708.1; NP_620709.1).
IMMUNOGEN:	MAPK9 antibody was raised against a 14 amino acid synthetic peptide near the internal region of MAPK9 (aa 217-230).
HOST SPECIES:	Goat

Properties

PURIFICATION:	Antibody was purified from goat serum by ammonium sulphate precipitation followed by antigen affinity chromatography using the immunizing peptide.
PHYSICAL STATE:	Liquid
BUFFER:	MAPK9 antibody is supplied in Tris saline, 0.02% sodium azide, pH 7.3 with 0.5% bovine serum albumin.
CONCENTRATION:	500 ug/mL
STORAGE CONDITIONS:	Aliquot and store at -20°C. Minimize freezing and thawing.
CLONALITY:	Polyclonal
CONJUGATE:	Unconjugated

Additional Info

ALTERNATE NAMES:	MAPK9, stress-activated protein kinase JNK2, SAPK, PRKM9, p54aSAPK, p54a, OTTHUMP00000161543,
-------------------------	---

OTTHUMP00000161542, mitogen-activated protein kinase 9, MAPK 9, MAP kinase 9, Jun kinase, JNK-55, JNK2BETA, JNK2B, JNK2ALPHA, JNK2A, JNK2, c-Jun N-terminal kinase 2, c-Jun kinase 2, SAPK1A

ACCESSION NO.: NP_620708.1, NP_620709.1

PROTEIN GI NO.: 21237742

OFFICIAL SYMBOL: MAPK9

GENE ID: 5601

Background

FOR RESEARCH USE ONLY

December 13, 2016