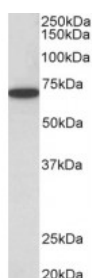


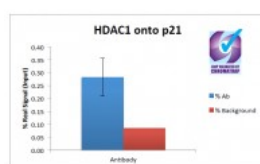


HDAC1 Antibody

CATALOG NUMBER: 42-976



Western Blot (0.5ug/ml) staining of HeLa lysate (35ug protein in RIPA buffer). Primary incubation was 1 hour. Detected by chemiluminescence.



ChIP of 2ug antibody with 1ug MCF7 chromatin using the Chromatrap® spin column sonication kit (Protein G) measuring H3 enrichment onto the p21 locus.

Specifications

SPECIES REACTIVITY:	Human, Mouse
TESTED APPLICATIONS:	ChIP, ELISA, WB
APPLICATIONS:	ELISA: antibody detection limit dilution 1:4000. Western Blot: Appox 55kDa band observed in Human Lymph Node and Thymus lysates and approx 70kDa band observed in lysates of cell lines HeLa and NIH3T3 (calculated MW of 55.1kDa according to NP_004955.2). The observed 70kDa band represents the sumoylated Chromatin Immunoprecipitation: A 3.5-fold increased presence of H3 onto the Human P21 locus observed when comparing the precipitations using EB07186 with non-specific goat IgG to bring down HDAC1 in a chromatin lysate from MCF7 cells.
POSITIVE CONTROL:	1) Cat. No. 1201 - HeLa Cell Lysate
PREDICTED MOLECULAR WEIGHT:	Appox 55 kDa
IMMUNOGEN:	HDAC1 antibody was raised against a 12 amino acid synthetic peptide near the C-Terminus of HDAC1.
HOST SPECIES:	Goat

Properties

PURIFICATION:	Antibody was purified from goat serum by ammonium sulphate precipitation followed by antigen affinity chromatography using the immunizing peptide.
PHYSICAL STATE:	Liquid
BUFFER:	HDAC1 antibody is supplied in Tris saline, 0.02% sodium azide, pH 7.3 with 0.5% bovine serum albumin.
CONCENTRATION:	500 ug/mL
STORAGE CONDITIONS:	Aliquot and store at -20°C. Minimize freezing and thawing.
CLONALITY:	Polyclonal
CONJUGATE:	Unconjugated

Additional Info

ALTERNATE NAMES:	reduced potassium dependency, yeast homolog-like 1, RPD3L1, RPD3, HD1, GON-10, DKFZp686H12203, histone deacetylase 1, HDAC1
ACCESSION NO.:	NP_004955.2
PROTEIN GI NO.:	13128860
OFFICIAL SYMBOL:	HDAC1
GENE ID:	3065

Background

FOR RESEARCH USE ONLY

December 13, 2016