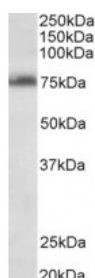




TSPYL2 Antibody

CATALOG NUMBER: 42-955



Western Blot (0.3ug/ml) staining of Jurkat lysate (35ug protein in RIPA buffer).
Primary incubation was 1 hour. Detected by chemiluminescence.

Specifications

SPECIES REACTIVITY:	Human
TESTED APPLICATIONS:	ELISA, WB
APPLICATIONS:	ELISA: antibody detection limit dilution 1:64000. Western Blot: Approx 75kDa band observed in lysates of cell lines Jurkat and MOLT4 (calculated MW of 79.4kDa according to NP_071400.1). Recommended concentration: 0.3-1ug/ml.
POSITIVE CONTROL:	1) Cat. No. 1205 - Jurkat Cell Lysate 2) Cat. No. 1205 - MOLT4 Cell Lysate
PREDICTED MOLECULAR WEIGHT:	Approx 75 kDa
IMMUNOGEN:	TSPYL2 Antibody was raised against a 14 amino acid sequence near the internal region of TSPYL2 (aa441-454).
HOST SPECIES:	Goat

Properties

PURIFICATION:	Antibody was purified from goat serum by ammonium sulphate precipitation followed by antigen affinity chromatography using the immunizing peptide.
PHYSICAL STATE:	Liquid
BUFFER:	TSPYL2 antibody is supplied in Tris saline, 0.02% sodium azide, pH 7.3 with 0.5% bovine serum albumin.
CONCENTRATION:	500 ug/mL
STORAGE CONDITIONS:	Aliquot and store at -20°C. Minimize freezing and thawing.
CLONALITY:	Polyclonal
CONJUGATE:	Unconjugated

Additional Info

ALTERNATE NAMES:	TSPYL2, TSPY-like protein 2, TSPY-like 2, TSPX, testis-specific Y-encoded-like protein 2, testis-specific protein Y encoded-like 2, SE204, nuclear protein of 79 kDa, NP79, HRIHFB2216, differentially-expressed nucleolar TGF-beta1 target protein, differentially expressed nucleolar TGF-beta1 target, DENTT, cutaneous T-cell lymphoma-
-------------------------	---

associated tumor antigen se20-4, cutaneous T-cell lymphoma-associated antigen se20-4, CTCL-associated antigen se20-4, CTCL tumor antigen se20-4, CTCL, CINAP, cell division autoantigen 1, CDA1, CASK-interacting nucleosome assembly protein

ACCESSION NO.: NP_071400.1

PROTEIN GI NO.: 11545835

OFFICIAL SYMBOL: TSPYL2

GENE ID: 64061

Background

FOR RESEARCH USE ONLY

December 13, 2016