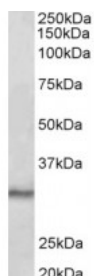


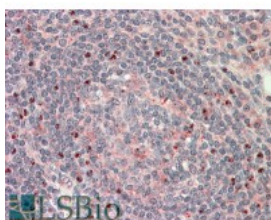


CTDSP1 Antibody

CATALOG NUMBER: 42-941



Western Blot (0.1ug/ml) staining of Mouse Testis lysate (35ug protein in RIPA buffer). Primary incubation was 1 hour. Detected by chemiluminescence.



Immunohistochemistry (5ug/ml) staining of paraffin embedded Human Tonsil. Steamed antigen retrieval with citrate buffer pH 6, AP-staining.

Specifications

| | |
|------------------------------------|--|
| SPECIES REACTIVITY: | Human, Mouse |
| TESTED APPLICATIONS: | ELISA, IHC-P, WB |
| APPLICATIONS: | ELISA: antibody detection limit dilution 1:16000. Western Blot: Approx 30kDa band observed in Mouse Testis lysates (calculated MW of 29.3kDa according to Mouse NP_694728.1). Recommended concentration: 0.1-0.3ug/ml. Immunohistochemistry: In paraffin embedded Human Tonsil shows nucleolar staining in select cells outside the follicles. Recommended concentration, 5-10ug/ml. |
| POSITIVE CONTROL: | 1) Cat. No. 1416 - Mouse Testis Tissue Lysate |
| PREDICTED MOLECULAR WEIGHT: | Approx 30 kDa |
| SPECIFICITY: | This antibody is expected to recognise both reported isoforms (NP_067021 and NP_872580) |
| IMMUNOGEN: | CTDSP1 Antibody was raised against a 11 amino acid sequence near the internal region of CTDSP1. |
| HOST SPECIES: | Goat |

Properties

| | |
|----------------------------|--|
| PURIFICATION: | Antibody was purified from goat serum by ammonium sulphate precipitation followed by antigen affinity chromatography using the immunizing peptide. |
| PHYSICAL STATE: | Liquid |
| BUFFER: | CTDSP1 antibody is supplied in Tris saline, 0.02% sodium azide, pH 7.3 with 0.5% bovine serum albumin. |
| CONCENTRATION: | 500 ug/mL |
| STORAGE CONDITIONS: | Aliquot and store at -20°C. Minimize freezing and thawing. |
| CLONALITY: | Polyclonal |
| CONJUGATE: | Unconjugated |

Additional Info

| | |
|-------------------------|---|
| ALTERNATE NAMES: | Synaptonemal Complex Protein 1, nuclear LIM interactor-interacting factor, small CTD phosphatase 1, CTD (carboxy-terminal domain, RNA polymerase II, polypeptide A) small phosphatase 1, NLIIF, SCP1, CTDSP1, |
|-------------------------|---|

| | |
|------------------|--------------------------|
| | NIF3 |
| ACCESSION NO.: | NP_067021.1, NP_872580.1 |
| PROTEIN GI NO.: | 10864009 |
| OFFICIAL SYMBOL: | CTDSP1 |
| GENE ID: | 58190 |

Background

FOR RESEARCH USE ONLY

December 13, 2016