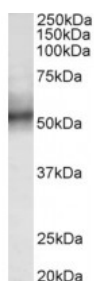




## TRIM11 Antibody

CATALOG NUMBER: 42-938



Western Blot (0.3ug/ml) staining of Human Spleen lysate (35ug protein in RIPA buffer). Primary incubation was 1 hour. Detected by chemiluminescence.

### Specifications

<b>SPECIES REACTIVITY:</b>	Human
<b>TESTED APPLICATIONS:</b>	ELISA, WB
<b>APPLICATIONS:</b>	ELISA: antibody detection limit dilution 1:32000. Western Blot: Approx 52kDa band observed in Human Spleen lysates (calculated MW of 52.8kDa according to NP_660215.1). Recommended concentration: 0.3-1ug/ml.
<b>POSITIVE CONTROL:</b>	1) Cat. No. 1306 - Human Spleen Tissue Lysate
<b>PREDICTED MOLECULAR WEIGHT:</b>	Approx 52 kDa
<b>IMMUNOGEN:</b>	TRIM11 Antibody was raised against a 15 amino acid sequence near the internal region of TRIM11 (aa249-263).
<b>HOST SPECIES:</b>	Goat

### Properties

<b>PURIFICATION:</b>	Antibody was purified from goat serum by ammonium sulphate precipitation followed by antigen affinity chromatography using the immunizing peptide.
<b>PHYSICAL STATE:</b>	Liquid
<b>BUFFER:</b>	TRIM11 antibody is supplied in Tris saline, 0.02% sodium azide, pH 7.3 with 0.5% bovine serum albumin.
<b>CONCENTRATION:</b>	500 ug/mL
<b>STORAGE CONDITIONS:</b>	Aliquot and store at -20°C. Minimize freezing and thawing.
<b>CLONALITY:</b>	Polyclonal
<b>CONJUGATE:</b>	Unconjugated

### Additional Info

<b>ALTERNATE NAMES:</b>	TRIM11, tripartite motif-containing protein 11, tripartite motif-containing 11, tripartite motif containing 11, RNF92, RING finger protein 92, E3 ubiquitin-protein ligase TRIM11, BIA1
<b>ACCESSION NO.:</b>	NP_660215.1
<b>PROTEIN GI NO.:</b>	21630277

OFFICIAL SYMBOL: TRIM11

GENE ID: 81559

Background

FOR RESEARCH USE ONLY

December 13, 2016