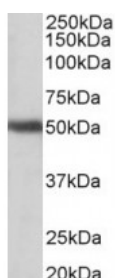




## GPR83 Antibody

CATALOG NUMBER: 42-936



Western Blot (1ug/ml) staining of Human Cerebellum lysate (35ug protein in RIPA buffer). Primary incubation was 1 hour. Detected by chemiluminescence.

### Specifications

<b>APPLICATIONS:</b>	ELISA: antibody detection limit dilution 1:2000. Western Blot: Approx 50kDa band observed in Human Brain (Cerebellum, Cerebral Cortex and Amygdala) lysates (calculated MW of 48.3kDa according to NP_057624.3). Recommended concentration: 1-3ug/ml.
<b>POSITIVE CONTROL:</b>	1) Cat. No. 1362 - Human Cerebellum, Left Lysate Cat. No. 1363 - Human Cerebellum, Right Lysate 2) Cat. No. XBL-10106 - Human Cerebral Cortex Tissue Lysate 3) Cat. No. 11031 - Human Amygdala Tissue Lysate
<b>PREDICTED MOLECULAR WEIGHT:</b>	Approx 50 kDa
<b>SPECIFICITY:</b>	The immunizing peptide represents part of an extracellular domain.
<b>IMMUNOGEN:</b>	GPR83 Antibody was raised against a 14 amino acid sequence near the N-Terminus of GPR83 (aa17-30).
<b>HOST SPECIES:</b>	Goat

### Properties

<b>PURIFICATION:</b>	Antibody was purified from goat serum by ammonium sulphate precipitation followed by antigen affinity chromatography using the immunizing peptide.
<b>PHYSICAL STATE:</b>	Liquid
<b>BUFFER:</b>	GPR83 antibody is supplied in Tris saline, 0.02% sodium azide, pH 7.3 with 0.5% bovine serum albumin.
<b>CONCENTRATION:</b>	500 ug/mL
<b>STORAGE CONDITIONS:</b>	Aliquot and store at -20°C. Minimize freezing and thawing.
<b>CLONALITY:</b>	Polyclonal
<b>CONJUGATE:</b>	Unconjugated

### Additional Info

<b>ALTERNATE NAMES:</b>	GPR83, probable G-protein coupled receptor 83, G-protein coupled receptor 72, GPR72, glucocorticoid induced receptor, GIR, G protein-coupled receptor 83, G protein-coupled receptor 72, KIAA1540
-------------------------	---

ACCESSION NO.:	NP_057624.3
PROTEIN GI NO.:	223633971
OFFICIAL SYMBOL:	GPR83
GENE ID:	10888

## Background

FOR RESEARCH USE ONLY

December 13, 2016