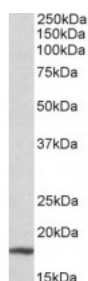




Cdkn2a Antibody

CATALOG NUMBER: 42-917



Western Blot (0.3ug/ml) staining of Mouse Liver lysate (35ug protein in RIPA buffer). Primary incubation was 1 hour. Detected by chemiluminescence.

Specifications

SPECIES REACTIVITY:	Mouse
TESTED APPLICATIONS:	ELISA, WB
APPLICATIONS:	ELISA: antibody detection limit dilution 1:64000. Western Blot: Approx 18kDa band observed in Mouse Kidney and Liver lysates (calculated MW of 19.2kDa according to NP_034007.1). Recommended concentration: 0.3-1ug/ml.
POSITIVE CONTROL:	1) Cat. No. 1405 - Mouse Kidney Tissue Lysate 2) Mouse Liver
PREDICTED MOLECULAR WEIGHT:	Approx 18 kDa
SPECIFICITY:	This antibody is expected to recognize isoform p19ARF (NP_034007.1) only.
IMMUNOGEN:	Cdkn2a Antibody was raised against a 14 amino acid sequence near the internal region of Cdkn2a (mouse).
HOST SPECIES:	Goat

Properties

PURIFICATION:	Antibody was purified from goat serum by ammonium sulphate precipitation followed by antigen affinity chromatography using the immunizing peptide.
PHYSICAL STATE:	Liquid
BUFFER:	Cdkn2a antibody is supplied in Tris saline, 0.02% sodium azide, pH 7.3 with 0.5% bovine serum albumin.
CONCENTRATION:	500 ug/mL
STORAGE CONDITIONS:	Aliquot and store at -20°C. Minimize freezing and thawing.
CLONALITY:	Polyclonal
CONJUGATE:	Unconjugated

Additional Info

ALTERNATE NAMES:	Cdkn2a, RP23-16618.5, Pctr1, p19ARF, p16-INK4a, p16INK4a, p16-INK4, p16(INK4a), p16, OTTMUSP00000008143, MTS1, mitochondrial smARF, INK4a-ARF, Ink4a/Arf, cyclin-dependent kinase inhibitor
-------------------------	---

protein, cyclin-dependent kinase inhibitor 2A, isoforms 1/2, cyclin-dependent kinase inhibitor 2A (p16, inhibits CDK4), cyclin-dependent kinase 4 inhibitor A, CDK4I, ARF-INK4a, Arf, P16ink4a

ACCESSION NO.: NP_034007.1

PROTEIN GI NO.: 6753390

OFFICIAL SYMBOL: Cdkn2a

GENE ID: 12578 (mouse);

Background

FOR RESEARCH USE ONLY

December 13, 2016