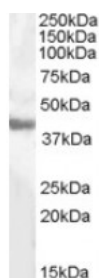




## GOT1 Antibody

CATALOG NUMBER: 45-689



Western Blot (0.5ug/ml) staining of Human Liver lysate (35ug protein in RIPA buffer). Primary incubation was 1 hour. Detected by chemiluminescence.

### Specifications

<b>SPECIES REACTIVITY:</b>	Human
<b>TESTED APPLICATIONS:</b>	ELISA, WB
<b>APPLICATIONS:</b>	ELISA: antibody detection limit dilution 1:16000. Western Blot: Approx 40kDa band observed in Human Liver lysates (calculated MW of 46.2kDa according to NP_002070.1). The observed molecular weight corresponds to earlier findings in literature with different antibodies (Berk et al, Proc Natl Acad Sci U S
<b>POSITIVE CONTROL:</b>	1) Cat. No. 1304 - Human Liver Tissue Lysate
<b>IMMUNOGEN:</b>	GOT1 antibody was raised against a 14 amino acid synthetic peptide near the internal region of GOT1 (aa 22-35).
<b>HOST SPECIES:</b>	Goat

### Properties

<b>PURIFICATION:</b>	GOT1 antibody was purified from goat serum by ammonium sulphate precipitation followed by antigen affinity chromatography using the immunizing peptide.
<b>PHYSICAL STATE:</b>	Liquid
<b>BUFFER:</b>	GOT1 antibody is supplied in Tris saline, 0.02% sodium azide, pH 7.3 with 0.5% bovine serum albumin.
<b>CONCENTRATION:</b>	500 ug/mL
<b>STORAGE CONDITIONS:</b>	Aliquot and store at -20°C. Minimize freezing and thawing.
<b>CLONALITY:</b>	Polyclonal
<b>CONJUGATE:</b>	Unconjugated

### Additional Info

<b>ALTERNATE NAMES:</b>	glutamic-oxaloacetic transaminase 1, soluble (aspartate aminotransferase 1), GIG18, aspartate aminotransferase 1, growth-inhibiting protein 18, GOT1, cCAT, cAspAT, ASTQTL1
<b>ACCESSION NO.:</b>	NP_002070.1
<b>PROTEIN GI NO.:</b>	4504067
<b>OFFICIAL SYMBOL:</b>	GOT1

---

**GENE ID:** 2805

---

**Background**

**REFERENCES:** 1) Teichberg VI. From the liver to the brain across the blood-brain barrier. Proc Natl Acad Sci USA. 2007 May 1;104(18):7315-6. Epub 2007 Apr 26. No

---

**FOR RESEARCH USE ONLY**

December 13, 2016