

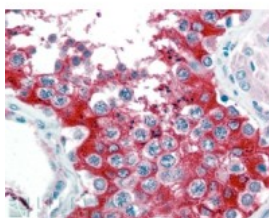


G6PD Antibody

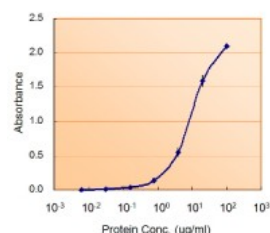
CATALOG NUMBER: 45-644



Western Blot (0.03ug/ml) staining of Human Testis lysate (35ug protein in RIPA buffer). Primary incubation was 1 hour. Detected by chemiluminescence.



Immunohistochemistry (2.5ug/ml) staining of paraffin embedded Human Testis. Steamed antigen retrieval with citrate buffer pH 6, AP-staining.



Antibody used in Sandwich ELISA as detection antibody at (5ug/ml).

Specifications

SPECIES REACTIVITY:	Human
TESTED APPLICATIONS:	EIA, ELISA, IHC-P, WB
APPLICATIONS:	ELISA: antibody detection limit dilution 1:32000. Western Blot: Approx 55-60kDa double band observed in Human Testis, Thyroid and Tonsil lysates (calculated MW of 62.5kDa according to NP_000393.4 and 59.3kDa according to NP_001035810.1). Recommended concentration: 0.03-0.1ug/ml. Immunohistochemistry: In paraffin embedded Human Testis shows strong cytoplasm staining in spermatogonia. Recommended concentration, 2-4ug/ml. Enzyme immunoassay: Sandwich-type ELISA with increasing amount of recombinant G6PD captured by a rabbit antibody. Recommended reporter concentration: 5-10ug/ml
POSITIVE CONTROL:	1) Cat. No. 1313 - Human Testis Tissue Lysate
SPECIFICITY:	This antibody is expected to recognise both reported isoforms (NP_000393.4 and NP_001035810.1).
IMMUNOGEN:	G6PD antibody was raised against a 15 amino acid synthetic peptide near the internal region of G6PD (aa 308-320).
HOST SPECIES:	Goat

Properties

PURIFICATION:	G6PD antibody was purified from goat serum by ammonium sulphate precipitation followed by antigen affinity chromatography using the immunizing peptide.
PHYSICAL STATE:	Liquid
BUFFER:	G6PD antibody is supplied in Tris saline, 0.02% sodium azide, pH 7.3 with 0.5% bovine serum albumin.
CONCENTRATION:	500 ug/mL
STORAGE CONDITIONS:	Aliquot and store at -20°C. Minimize freezing and thawing.
CLONALITY:	Polyclonal
CONJUGATE:	Unconjugated

Additional Info

ALTERNATE NAMES:	G6PD, glucose-6-phosphate dehydrogenase, G6PD1, glucose-6-phosphate 1-dehydrogenase, G6PD
-------------------------	---

ACCESSION NO.: NP_000393.4 , NP_001035810.1

PROTEIN GI NO.: 109389365

OFFICIAL SYMBOL: IKZF1

GENE ID: 2539

Background

REFERENCES: 1) Guindo A, Fairhurst RM, Doumbo OK, Wellem TE, Diallo DA. X-Linked G6PD Deficiency Protects Hemizygous Males but Not Heterozygous Females against Severe Malaria. PLoS Med. 2007 Mar 13;4(3):e66

FOR RESEARCH USE ONLY

December 13, 2016