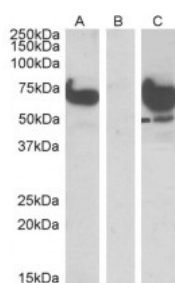




## EPM2A Antibody

CATALOG NUMBER: 45-547



HEK293 lysate (10ug protein in RIPA buffer) overexpressing Human EPM2AIP1 with DYKDDDDK tag probed with antibody (1ug/ml) in Lane A and probed with anti-DYKDDDDK Tag (1/1000) in lane C. Mock-transfected HEK293 probed with antibody (1mg/ml) in Lane B. Primar

### Specifications

<b>SPECIES REACTIVITY:</b>	Human
<b>TESTED APPLICATIONS:</b>	ELISA, WB
<b>APPLICATIONS:</b>	ELISA: antibody detection limit dilution 1:16000. Western Blot: In transfected HEK293 transiently expressing full-length Human EPM2AIP1 (myc and DYKDDDDK tagged), a band of approx. 75kDa was observed. No bands were observed in mock-transfected HEK293 and the same band was observed using anti- DYKDDDDK t
<b>IMMUNOGEN:</b>	EPM2A antibody was raised against a synthetic peptide of EPM2A.
<b>HOST SPECIES:</b>	Goat

### Properties

<b>PURIFICATION:</b>	EPM2A antibody was purified from goat serum by ammonium sulphate precipitation followed by antigen affinity chromatography using the immunizing peptide.
<b>PHYSICAL STATE:</b>	Liquid
<b>BUFFER:</b>	EPM2A antibody is supplied in Tris saline, 0.02% sodium azide, pH 7.3 with 0.5% bovine serum albumin.
<b>CONCENTRATION:</b>	500 ug/mL
<b>STORAGE CONDITIONS:</b>	Aliquot and store at -20°C. Minimize freezing and thawing.
<b>CLONALITY:</b>	Polyclonal
<b>CONJUGATE:</b>	Unconjugated

### Additional Info

<b>ALTERNATE NAMES:</b>	EPM2AIP1, FLJ11207, KIAA0766, EPM2A (laforin) interacting protein 1, laforin interacting protein 1, My007
<b>ACCESSION NO.:</b>	NP_055620
<b>PROTEIN GI NO.:</b>	7662294
<b>OFFICIAL SYMBOL:</b>	EPM2AIP1

GENE ID: 9852

---

### Background

**REFERENCES:** 1) Chan EM, Ackerley CA, Lohi H, Ianzano L, Cortez MA, Shannon P, Scherer SW, Minassian BA. Laforin preferentially binds the neurotoxic starch-like polyglucosans, which form in its absence in progressive myoclonus epilepsy. Hum Mol Genet. 2004 Jun 1;13(11):1117-29. Epub 2004 Apr 21.

---

FOR RESEARCH USE ONLY

December 13, 2016