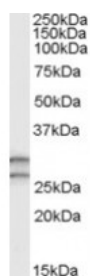




COMT Antibody

CATALOG NUMBER: 45-415



Staining of human testis lysate (35ug protein in RIPA buffer) with antibody (0.3ug/ml). Primary incubation was 1 hour. Detected by chemiluminescence.

Specifications

SPECIES REACTIVITY:	Human
TESTED APPLICATIONS:	ELISA, WB
APPLICATIONS:	ELISA: antibody detection limit dilution 1:8000. Western Blot: Approx 26kDa plus 29kDa bands observed in Human Testis lysates (calculated MW of 30.0kDa according to NP_000745.1 and of 24.5kDa according to NP_009294.1). Recommended concentration: 0.3-1ug/ml.
POSITIVE CONTROL:	1) Cat. No. 1313 - Human Testis Tissue Lysate
SPECIFICITY:	This antibody is expected to recognise both reported isoforms. Variants (NP_000745.1; NP_001128633.1; NP_001128634.1) encode the same isoform.
IMMUNOGEN:	COMT antibody was raised against a 15 amino acid synthetic peptide near the N-Terminus of COMT.
HOST SPECIES:	Goat

Properties

PURIFICATION:	COMT antibody was purified from goat serum by ammonium sulphate precipitation followed by antigen affinity chromatography using the immunizing peptide.
PHYSICAL STATE:	Liquid
BUFFER:	COMT antibody is supplied in Tris saline, 0.02% sodium azide, pH 7.3 with 0.5% bovine serum albumin.
CONCENTRATION:	500 ug/mL
STORAGE CONDITIONS:	Aliquot and store at -20°C. Minimize freezing and thawing.
CLONALITY:	Polyclonal
CONJUGATE:	Unconjugated

Additional Info

ALTERNATE NAMES:	COMT, catechol-O-methyltransferase, HEL-S-98n
ACCESSION NO.:	NP_000745.1, NP_009294.1
PROTEIN GI NO.:	4502969

OFFICIAL SYMBOL: COMT

GENE ID: 1312

Background

REFERENCES: 1) Tunbridge EM, Harrison PJ, Weinberger DR. Catechol-o-Methyltransferase, Cognition, and Psychosis: Val(158)Met and Beyond. Biol Psychiatry. 2006 Feb 11;

FOR RESEARCH USE ONLY

December 13, 2016