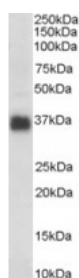




## Clusterin Antibody

CATALOG NUMBER: 45-407



Western Blot (0.3ug/ml) staining of human colon lysate (35ug protein in RIPA buffer). Primary incubation was 1 hour. Detected by chemiluminescence.

### Specifications

<b>SPECIES REACTIVITY:</b>	Human
<b>TESTED APPLICATIONS:</b>	ELISA, WB
<b>APPLICATIONS:</b>	ELISA: antibody detection limit dilution 1:32000. Western Blot: Approx 35-37kDa band observed in human colon, kidney and prostate lysates (calculated MW of 57.8kDa according to NP_001822.2 and 52.5 according to NP_976084.1). The observed molecular weight corresponds to earlier findings in literature with
<b>POSITIVE CONTROL:</b>	1) Cat. No. 1320 - Human Colon Tissue Lysate
<b>SPECIFICITY:</b>	This antibody is expected to recognise both reported isoforms (NP_001822.2 and NP_976084.1)
<b>IMMUNOGEN:</b>	Clusterin antibody was raised against a 14 amino acid synthetic peptide near the C-Terminus of Clusterin.
<b>HOST SPECIES:</b>	Goat

### Properties

<b>PURIFICATION:</b>	Clusterin antibody was purified from goat serum by ammonium sulphate precipitation followed by antigen affinity chromatography using the immunizing peptide.
<b>PHYSICAL STATE:</b>	Liquid
<b>BUFFER:</b>	Clusterin antibody is supplied in Tris saline, 0.02% sodium azide, pH 7.3 with 0.5% bovine serum albumin.
<b>CONCENTRATION:</b>	500 ug/mL
<b>STORAGE CONDITIONS:</b>	Aliquot and store at -20°C. Minimize freezing and thawing.
<b>CLONALITY:</b>	Polyclonal
<b>CONJUGATE:</b>	Unconjugated

### Additional Info

<b>ALTERNATE NAMES:</b>	CLU, clusterin, complement lysis inhibitor, SP-40, 40, sulfated glycoprotein 2, testosterone-repressed prostate message 2, apolipoprotein J, HGNC:2095, APOJ, CLI, MGC24903, SGP-2, SGP2, TRPM-2, TRPM2, complement-associated protein SP-40, KUB1, AAG4
<b>ACCESSION NO.:</b>	NP_001822.2, NP_976084.1
<b>PROTEIN GI NO.:</b>	42716297

OFFICIAL SYMBOL:	CLU
GENE ID:	1191

### Background

**REFERENCES:** 1) Xie D, Lau SH, Sham JS, Wu QL, Fang Y, Liang LZ, Che LH, Zeng YX, Guan XY. Up-regulated expression of cytoplasmic clusterin in human ovarian carcinoma. Cancer. 2005 Jan 15;103(2):277-83.

FOR RESEARCH USE ONLY

December 13, 2016