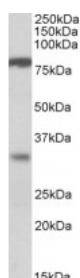




CLCA1 Antibody

CATALOG NUMBER: 45-405



Western Blot (1ug/ml) staining of Human Duodenum lysate (35ug protein in RIPA buffer). Primary incubation was 1 hour. Detected by chemiluminescence.

Specifications

SPECIES REACTIVITY:	Human
TESTED APPLICATIONS:	ELISA, WB
APPLICATIONS:	ELISA: antibody detection limit dilution 1:16000. Western Blot: Experiments gave bands at approx 80kDa and 30kDa in Human Duodenum lysates. These bands correspond to earlier findings in literature with different antibodies (Gruber et al, Genomics. 1998 Dec 1;54(2):200-14.). This protein has a calculated
SPECIFICITY:	No cross-reactivity expected with CLCA2 and 3.
IMMUNOGEN:	CLCA1 antibody was raised against a 12 amino acid synthetic peptide near the internal region of CLCA1.
HOST SPECIES:	Goat

Properties

PURIFICATION:	CLCA1 antibody was purified from goat serum by ammonium sulphate precipitation followed by antigen affinity chromatography using the immunizing peptide.
PHYSICAL STATE:	Liquid
BUFFER:	CLCA1 antibody is supplied in Tris saline, 0.02% sodium azide, pH 7.3 with 0.5% bovine serum albumin.
CONCENTRATION:	500 ug/mL
STORAGE CONDITIONS:	Aliquot and store at -20°C. Minimize freezing and thawing.
CLONALITY:	Polyclonal
CONJUGATE:	Unconjugated

Additional Info

ALTERNATE NAMES:	CLCA1, chloride channel, calcium activated, family member 1, HGNC:2015, CaCC, calcium activated chloride channel 1, CACC1
ACCESSION NO.:	NP_001276.1
PROTEIN GI NO.:	4502865
OFFICIAL SYMBOL:	CLCA1

GENE ID: 1179

Background

REFERENCES: 1) Malerba G, Pignatti PF. A review of asthma genetics: gene expression studies and recent candidates. J Appl Genet. 2005;46(1):93-104. Review.

FOR RESEARCH USE ONLY

December 13, 2016