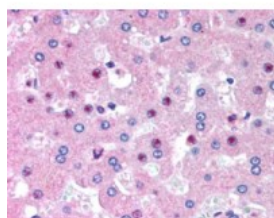




C14orf68 Antibody

CATALOG NUMBER: 45-347



Immunohistochemistry (2.5ug/ml) staining
of paraffin embedded Human Liver.
Steamed antigen retrieval with citrate
buffer pH 6, AP-staining.

Specifications

SPECIES REACTIVITY:	Human
TESTED APPLICATIONS:	ELISA, IHC-P
APPLICATIONS:	ELISA: antibody detection limit dilution 1:32000. Western Blot: Preliminary experiments gave an approx 22kDa band in Human Liver lysates after 0.5ug/ml antibody staining. Please note that currently we cannot find an explanation in the literature for the band we observe given the calculated size of 33.4k Immunohistochemistry: In paraffin embedded Human Liver shows staining of nucleoli in select hepatocytes. Recommended concentration, 2.5ug/ml.
POSITIVE CONTROL:	1) Cat. No. 1304 - Human Liver Tissue Lysate
IMMUNOGEN:	C14orf68 antibody was raised against a 13 amino acid synthetic peptide near the internal region of C14orf68.
HOST SPECIES:	Goat

Properties

PURIFICATION:	C14orf68 antibody was purified from goat serum by ammonium sulphate precipitation followed by antigen affinity chromatography using the immunizing peptide.
PHYSICAL STATE:	Liquid
BUFFER:	C14orf68 antibody is supplied in Tris saline, 0.02% sodium azide, pH 7.3 with 0.5% bovine serum albumin.
CONCENTRATION:	500 ug/mL
STORAGE CONDITIONS:	Aliquot and store at -20°C. Minimize freezing and thawing.
CLONALITY:	Polyclonal
CONJUGATE:	Unconjugated

Additional Info

ALTERNATE NAMES:	C14orf68, chromosome 14 open reading frame 68, HDMCP, HMFN1655, hepatocellular carcinoma-downregulated mitochondrial carrier protein, C14orf68
ACCESSION NO.:	NP_997000.2
PROTEIN GI NO.:	46397377

OFFICIAL SYMBOL: C14orf68

GENE ID: 283600

Background

REFERENCES: 1) Tan MG, Ooi LL, Aw SE, Hui KM. Cloning and identification of hepatocellular carcinoma down-regulated mitochondrial carrier protein, a novel liver-specific uncoupling protein. J Biol Chem. 2004 Oct 22;279(43):45235-44. Epub 2004 Aug 18.

FOR RESEARCH USE ONLY

December 13, 2016