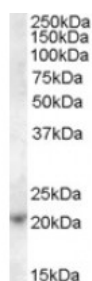




ASF1A Antibody

CATALOG NUMBER: 45-301



Western Blot (1ug/ml) staining of Jurkat cell lysate (35ug protein in RIPA buffer). Primary incubation was 1 hour. Detected by chemiluminescence.

Specifications

SPECIES REACTIVITY:

TESTED APPLICATIONS:

APPLICATIONS:	ELISA: antibody detection limit dilution 1:32000. Western Blot: Approx 21kDa band observed in lysates of cell line Jurkat (calculated MW of 23.0kDa according to NP_054753.1). Recommended concentration: 1-3ug/ml.
POSITIVE CONTROL:	1) Cat. No. 1205 - Jurkat Cell Lysate
IMMUNOGEN:	ASF1A antibody was raised against an 11 amino acid synthetic peptide near the C-Terminus of ASF1A.
HOST SPECIES:	Goat

Properties

PURIFICATION:	ASF1A antibody was purified from goat serum by ammonium sulphate precipitation followed by antigen affinity chromatography using the immunizing peptide.
PHYSICAL STATE:	Liquid
BUFFER:	ASF1A antibody is supplied in Tris saline, 0.02% sodium azide, pH 7.3 with 0.5% bovine serum albumin.
CONCENTRATION:	500 ug/mL
STORAGE CONDITIONS:	Aliquot and store at -20°C. Minimize freezing and thawing.
CLONALITY:	Polyclonal
CONJUGATE:	Unconjugated

Additional Info

ALTERNATE NAMES:	ASF1A, ASF1 anti-silencing function 1 homolog A (S. cerevisiae), RP3-329L24.1, CGI-98, CIA, DKFZP547E2110, HSPC146, ASF1 anti-silencing function 1 homolog A, CCG1-interacting factor A, anti-silencing function 1A
ACCESSION NO.:	NP_054753.1
PROTEIN GI NO.:	7661592
OFFICIAL SYMBOL:	ASF1A

GENE ID: 25842

Background

REFERENCES: 1) Groth A, Ray-Gallet D, Quivy JP, Lukas J, Bartek J, Almouzni G. Human Asf1 regulates the flow of S phase histones during replicational stress. Mol Cell. 2005 Jan 21;17(2):301-11.

FOR RESEARCH USE ONLY

December 13, 2016