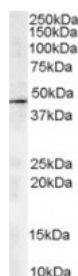




## ARP1 Antibody

CATALOG NUMBER: 45-290



Western Blot staining (2ug/ml) of human kidney lysate (RIPA buffer, 35ug total protein per lane). Primary incubated for 1 hour. Detected by western blot using chemiluminescence.

### Specifications

<b>SPECIES REACTIVITY:</b>	Human
<b>TESTED APPLICATIONS:</b>	ELISA, WB
<b>APPLICATIONS:</b>	ELISA: antibody detection limit dilution 1:1000. Western Blot: Approx. 45kDa band observed in Human Kidney lysates (calculated MW of 42.6kDa according to NP_005727.1). Recommended concentration: 1-3ug/ml.
<b>POSITIVE CONTROL:</b>	1) Cat. No. 1303 - Human Brain Tissue Lysate
<b>SPECIFICITY:</b>	This epitope was selected to minimise the chance of cross-reactivity with ACTR1B (YEEDGSRAIHRKT).
<b>IMMUNOGEN:</b>	ARP1 antibody was raised against a 13 amino acid synthetic peptide near the C-Terminus of ARP1.
<b>HOST SPECIES:</b>	Goat

### Properties

<b>PURIFICATION:</b>	ARP1 antibody was purified from goat serum by ammonium sulphate precipitation followed by antigen affinity chromatography using the immunizing peptide.
<b>PHYSICAL STATE:</b>	Liquid
<b>BUFFER:</b>	ARP1 antibody is supplied in Tris saline, 0.02% sodium azide, pH 7.3 with 0.5% bovine serum albumin.
<b>CONCENTRATION:</b>	500 ug/mL
<b>STORAGE CONDITIONS:</b>	Aliquot and store at -20°C. Minimize freezing and thawing.
<b>CLONALITY:</b>	Polyclonal
<b>CONJUGATE:</b>	Unconjugated

### Additional Info

<b>ALTERNATE NAMES:</b>	ACTR1A, ARP1, ARP1 actin-related protein 1 homolog A, centractin alpha (yeast), actin-RPV, centractin alpha, yeast homolog A, centrosome-associated actin homolog, ARP1 (actin-related protein 1, yeast) homolog A (centractin alpha), CTRN1
<b>ACCESSION NO.:</b>	NP_005727.1
<b>PROTEIN GI NO.:</b>	5031569

OFFICIAL SYMBOL:	ACTR1A
GENE ID:	10121

### Background

**REFERENCES:** 1) Lees-Miller JP, Helfman DM, Schroer TA. A vertebrate actin-related protein is a component of a multisubunit complex involved in microtubule-based vesicle motility. *Nature*. 1992 Sep 17;359(6392):244-6.

FOR RESEARCH USE ONLY

December 13, 2016