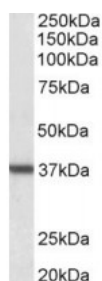




ARG1 Antibody

CATALOG NUMBER: 45-279



Western Blot (0.01ug/ml) staining of Human Liver lysate (35ug protein in RIPA buffer). Primary incubation was 1 hour. Detected by chemiluminescence.

Specifications

SPECIES REACTIVITY:	Human, Mouse
TESTED APPLICATIONS:	ELISA, WB
APPLICATIONS:	ELISA: antibody detection limit dilution 1:2000. Western Blot: Approx 37kDa band observed in Human Liver lysates (calculated MW of 34.7kDa according to NP_000036.2. Recommended concentration: 0.01-0.03ug/ml. An anonymous customer found positive results in WB on Mouse leukaemic monocyte macrophage cell
POSITIVE CONTROL:	1) Cat. No. 1304 - Human Liver Tissue Lysate
SPECIFICITY:	Please note that ARG1 is not expressed in Human M2 macrophages, but it is in other species (eg rodents).
IMMUNOGEN:	ARG1 antibody was raised against a 15 amino acid synthetic peptide near the C-Terminus of ARG1.
HOST SPECIES:	Goat

Properties

PURIFICATION:	ARG1 antibody was purified from goat serum by ammonium sulphate precipitation followed by antigen affinity chromatography using the immunizing peptide.
PHYSICAL STATE:	Liquid
BUFFER:	ARG1 antibody is supplied in Tris saline, 0.02% sodium azide, pH 7.3 with 0.5% bovine serum albumin.
CONCENTRATION:	500 ug/mL
STORAGE CONDITIONS:	Aliquot and store at -20°C. Minimize freezing and thawing.
CLONALITY:	Polyclonal
CONJUGATE:	Unconjugated

Additional Info

ALTERNATE NAMES:	ARG1, arginase, liver, A-I, type I,
ACCESSION NO.:	NP_000036.2
PROTEIN GI NO.:	10947139
OFFICIAL SYMBOL:	ARG1

GENE ID: 383

Background

REFERENCES: 1) Jiang M, Ding Y, Su Y, Hu X, Li J, Zhang Z. Arginase-flotillin interaction brings arginase to red blood cell membrane. FEBS Lett. 2006 Dec 11;580(28-29):6561-4. Epub 2006 Nov 13.

FOR RESEARCH USE ONLY

December 13, 2016