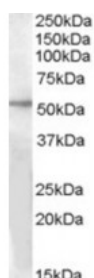




## GPR142 Antibody

CATALOG NUMBER: 46-853



Western blot analysis of GPR142 in human liver lysate (35 ug protein in RIPA buffer) with (B) and without (A) blocking with the immunizing peptide using GPR142 Antibody at 1 ug/mL.

### Specifications

<b>SPECIES REACTIVITY:</b>	Human
<b>TESTED APPLICATIONS:</b>	ELISA, WB
<b>APPLICATIONS:</b>	ELISA: Antibody detection limit dilution 1:32,000. Western Blot: Approximately 50-55 kDa band observed in human liver lysates (calculated MW of 51.1 kDa according to NP_861455.1). Recommended concentration: 1-3 ug/mL.
<b>POSITIVE CONTROL:</b>	1) Cat. No. 1304 - Human Liver Tissue Lysate
<b>IMMUNOGEN:</b>	GPR142 antibody was raised against a 13 amino acid synthetic peptide near the internal region of GPR142.
<b>HOST SPECIES:</b>	Goat

### Properties

<b>PURIFICATION:</b>	GPR142 antibody was purified from goat serum by ammonium sulphate precipitation followed by antigen affinity chromatography using the immunizing peptide.
<b>PHYSICAL STATE:</b>	Liquid
<b>BUFFER:</b>	GPR142 antibody is supplied in Tris saline, 0.02% sodium azide, pH 7.3 with 0.5% bovine serum albumin.
<b>CONCENTRATION:</b>	500 ug/mL
<b>STORAGE CONDITIONS:</b>	Aliquot and store at -20°C. Minimize freezing and thawing.
<b>CLONALITY:</b>	Polyclonal
<b>CONJUGATE:</b>	Unconjugated

### Additional Info

<b>ALTERNATE NAMES:</b>	GPR142, G protein-coupled receptor 142, PGR2
<b>ACCESSION NO.:</b>	NP_861455.1
<b>PROTEIN GI NO.:</b>	32401433
<b>OFFICIAL SYMBOL:</b>	GPR142

GENE ID: 350383

Background

FOR RESEARCH USE ONLY

December 13, 2016